

Anti-PAX6 Antibody (Center)

Catalog Number: A00273-1

About PAX6

PAX6 is paired box gene 6, one of many human homologs of the Drosophila melanogaster gene prd. In addition to the hallmark feature of this gene family, a conserved paired box domain, the encoded protein also contains a homeo box domain. Both domains are known to bind DNA, and function as regulators of gene transcription.

Overview

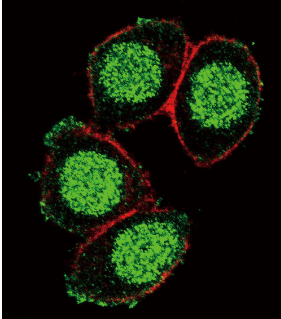
Product Name	Anti-PAX6 Antibody (Center)
Reactive Species	Human
Description	Boster Bio Anti-PAX6 Antibody (Center) (Catalog # A00273-1). Tested in WB, Flow Cytometry, IF, IHC-P application(s). This antibody reacts with Human.
Application	Flow Cytometry, IF, IHC-P, WB
Clonality	Polyclonal
Formulation	Purified polyclonal antibody supplied in PBS with 0.09% (W/V) sodium azide.
Storage Instructions	Maintain refrigerated at 2-8°C for up to 2 weeks. For long-term storage, store at -20°C in small aliquots to prevent freeze-thaw cycles.
Host	Rabbit
Uniprot ID	P26367

Technical Details

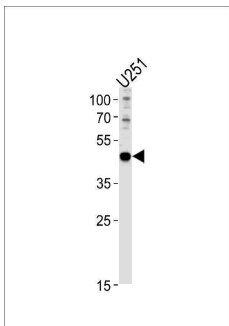
Immunogen	This PAX6 antibody is generated from rabbits immunized with a KLH conjugated synthetic peptide between 183-210 amino acids from the Central region of human PAX6.
Predicted Reactive Species	Bovine, Mouse, Rat, Xenopus
Recommended Detection Systems	Boster recommends Enhanced Chemiluminescent Kit with anti-Rabbit IgG (EK1002) for Western blot, and HRP Conjugated anti-Rabbit IgG Super Vision Assay Kit (SV0002-1) for IHC(P).
Cross Reactivity	No cross reactivity with other proteins.
Isotype	Rabbit IgG
Form	Liquid
Purification	This antibody is purified through a protein A column, followed by peptide affinity purification.
Suggested Dilutions	IF: 1:10-1:50

WB: 1:1000
IHC-P: 1:10-1:50
FC: 1:10-1:50

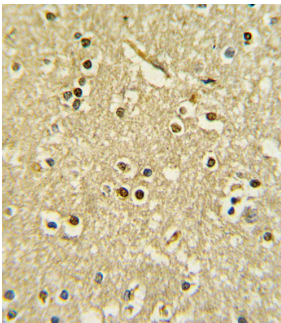
Anti-PAX6 Antibody (Center) (A00273-1) Images



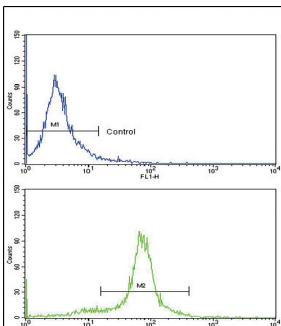
Confocal immunofluorescent analysis of PAX6 Antibody (Center) with HeLa cells followed by Alexa Fluor 488-conjugated goat anti-rabbit IgG (green). Actin filaments have been labeled with Alexa Fluor 555 phalloidin (red).



PAX6 Antibody (Center) western blot analysis in U251 cell line lysates (35ug/lane). This demonstrates the PAX6 antibody detected the PAX6 protein (arrow).



Formalin-fixed and paraffin-embedded human brain tissue with PAX6 Antibody (Center), which was peroxidase-conjugated to the secondary antibody, followed by DAB staining. This data demonstrates the use of this antibody for immunohistochemistry; clinical relevance has not been evaluated.



Flow cytometric analysis of HeLa cells using PAX6 Antibody (Center) (bottom histogram) compared to a negative control cell (top histogram). FITC-conjugated goat-anti-rabbit secondary antibodies were used for the analysis.

Submit a product review to Biocompare.com

Submit a review of this product to Biocompare.com to receive a \$20 Amazon.com giftcard! Your reviews help your fellow scientists make the right decisions. Thank you for your contribution.



Anti-PAX6 Antibody (Center)

For Research Use Only. Not for use in diagnostic procedures.