

Anti-Chk2 CHEK2 Antibody

Catalog Number: A00277

About CHEK2

The p53 tumor-suppressor gene integrates numerous signals that control cell life and death. Several novel molecules involved in p53 signaling, including Chk2, p53R2, p53AIP1, Noxa, PIDD, and PID/MTA2, were recently discovered. The checkpoint kinase Chk2 is the mammalian homologue of yeast Cds1/Rad53. In response to DNA damage, the checkpoint kinase ATM phosphorylates and activates Chk2, which in turn directly phosphorylates and activates p53. Chk2 serves as ATM downstream effector to mediate activation of p53. Chk2 also phosphorylates and activates BRCA1, the product of a tumor suppressor gene that is mutated in breast and ovarian cancer.

Overview

Product Name	Anti-Chk2 CHEK2 Antibody
Reactive Species	Human, Mouse, Rat
Description	Boster Bio Anti-Chk2 CHEK2 Antibody (Catalog # A00277). Tested in ELISA, WB, ICC, IF applications. This antibody reacts with Human, Mouse, Rat.
Application	ELISA, IF, ICC, WB
Clonality	Polyclonal
Formulation	Chk2 Antibody is supplied in PBS containing 0.02% sodium azide.
Storage Instructions	Chk2 antibody can be stored at 4°C for three months and -20°C, stable for up to one year. Avoid repeated freeze-thaw cycles. Antibodies should not be exposed to prolonged high temperatures.
Host	Rabbit
Uniprot ID	O96017

Technical Details

Immunogen	Chk2 antibody was raised against a synthetic peptide corresponding to amino acids near the amino terminus of human Chk2. The immunogen is located within the first 50 amino acids of Chk2.
Predicted Reactive Species	Bovine
Cross Reactivity	No cross response to IKKa, IKKb, IKKy, or IKKe.
Isotype	IgG
Form	Liquid
Concentration	1 mg/mL
Purification	Chk2 Antibody is affinity chromatography purified via peptide column.

Suggested Dilutions

Dilute the sample so that the expected range of concentrations fall within the detection range of this kit.

If the expected range of concentration is unknown, a pilot test should be conducted to decide the optimal dilution ratio for your samples.

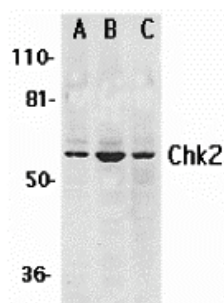
Some PubMed article(s) citing the expression level of this target are as follows:

Boster Bio's internal QC testing used:

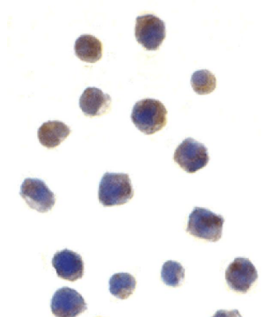
Chk2 antibody can be used for detection of Chk2 by Western blot at 1 ug/mL. Antibody can also be used for immunocytochemistry starting at 1 ug/mL. For immunofluorescence start at 5 ug/mL.

Antibody validated: Western Blot in human samples; Immunocytochemistry in human samples and Immunofluorescence in human samples. All other applications and species not yet tested. Optimal dilutions for each application should be determined by the researcher.

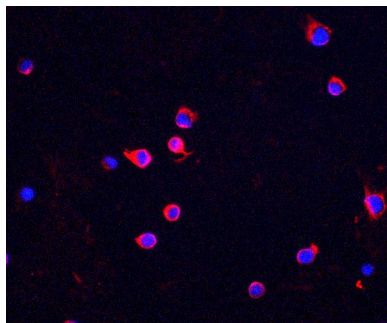
Anti-Chk2 CHEK2 Antibody (A00277) Images



Western blot analysis of Chk2 expression in (A) K562



Immunocytochemistry of Chk2 in Jurkat cells with Chk2 antibody at 1 ug/mL.



Immunofluorescence of Chk2 in Jurkat cells with Chk2 antibody at 5 ug/mL

Red: Chk2 Antibody (A00277)
Blue: DAPI staining

Submit a product review to Biocompare.com

Submit a review of this product to Biocompare.com to receive a \$20 Amazon.com giftcard! Your reviews help your fellow scientists make the right decisions. Thank you for your contribution.



Anti-Chk2 CHEK2 Antibody