

## Anti-CHEK2 Antibody Picoband®

Catalog Number: A00277-2

### About CHEK2

CHK2, a protein kinase that is activated in response to DNA damage, is involved in cell cycle arrest. Mapped on 22q12.1, CHK2 has a potential regulatory region rich in SQ and TQ amino acid pairs. It regulates BRCA1 function after DNA damage by phosphorylating serine-988 of BRCA1. Additionally, CHK2 can be modified by phosphorylation and activated in response to ionizing radiation, and can be also modified in response to hydroxyurea treatment. Furthermore, oligomerization of CHEK2 increases the efficiency of transautophosphorylation, resulting in the release of active CHEK2 monomers that proceed to enforce checkpoint control in irradiated cells. Moreover, CHK2 is a tumor suppressor gene conferring predisposition to sarcoma, breast cancer, and brain tumors, and that their observations provided a link between the central role of p53 inactivation in human cancer and the well-defined G2 checkpoint in yeast. There is a wide expression of small amounts of CHK2 mRNA with larger amounts in human testis, spleen, colon, and peripheral blood leukocytes.

### Overview

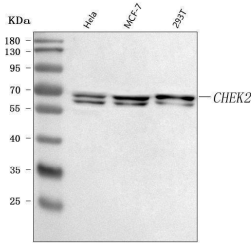
Product Name	Anti-CHEK2 Antibody Picoband®
Reactive Species	Human
Description	Boster Bio Anti-CHEK2 Antibody Picoband® catalog # A00277-2. Tested in ELISA, IF, ICC, WB applications. This antibody reacts with Human. The brand Picoband indicates this is a premium antibody that guarantees superior quality, high affinity, and strong signals with minimal background in Western blot applications. Only our best-performing antibodies are designated as Picoband, ensuring unmatched performance.
Application	ELISA, IF, ICC, WB
Clonality	Polyclonal
Formulation	Each vial contains 4 mg Trehalose, 0.9 mg NaCl, 0.2 mg Na <sub>2</sub> HPO <sub>4</sub> .
Storage Instructions	At -20°C for one year from date of receipt. After reconstitution, at 4°C for one month. It can also be aliquotted and stored frozen at -20°C for six months. Avoid repeated freezing and thawing.
Host	Rabbit
Uniprot ID	O96017

### Technical Details

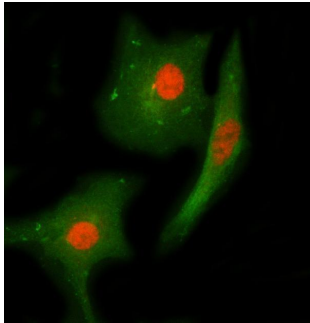
Immunogen	E.coli-derived human CHEK2 recombinant protein (Position: M1-R474).
Recommended Detection Systems	Boster recommends Enhanced Chemiluminescent Kit with anti-Rabbit IgG (EK1002) for Western blot, and HRP Conjugated anti-Rabbit IgG Super Vision Assay Kit (SV0002-1) for ICC.
Cross Reactivity	No cross-reactivity with other proteins.
Isotype	Rabbit IgG

Form	Lyophilized
Concentration	Adding 0.2 ml of distilled water will yield a concentration of 500 µg/ml.
Purification	Immunogen affinity purified.
Suggested Dilutions	Western blot, 0.25-0.5 ug/ml, Human Immunocytochemistry/Immunofluorescence, 5 ug/ml, Human ELISA, 0.1-0.5 ug/ml, -

## Anti-CHEK2 Antibody Picoband® (A00277-2) Images



Western blot analysis of CHEK2 using anti-CHEK2 antibody (A00277-2). Electrophoresis was performed on a 5-20% SDS-PAGE gel at 70V (Stacking gel) / 90V (Resolving gel) for 2-3 hours. The sample well of each lane was loaded with 30 ug of sample under reducing conditions. Lane 1: human Hela whole cell lysates, Lane 2: human MCF-7 whole cell lysates, Lane 3: human 293T whole cell lysates. After electrophoresis, proteins were transferred to a nitrocellulose membrane at 150 mA for 50-90 minutes. Blocked the membrane with 5% non-fat milk/TBS for 1.5 hour at RT. The membrane was incubated with rabbit anti-CHEK2 antigen affinity purified polyclonal antibody (Catalog # A00277-2) at 0.5 ug/mL overnight at 4°C, then washed with TBS-0.1%Tween 3 times with 5 minutes each and probed with a goat anti-rabbit IgG-HRP secondary antibody at a dilution of 1:5000 for 1.5 hour at RT. The signal is developed using an Enhanced Chemiluminescent detection (ECL) kit (Catalog # EK1002) with Tanon 5200 system. A specific band was detected for CHEK2 at approximately 62 kDa. The expected band size for CHEK2 is at 61 kDa.



IF analysis of CHEK2 using anti-CHEK2 antibody (A00277-2) and anti-Beta Tubulin antibody (M01857-3). CHEK2 was detected in immunocytochemical section of A549 cell. Enzyme antigen retrieval was performed using IHC enzyme antigen retrieval reagent (AR0022) for 15 mins. The cells were blocked with 10% goat serum. And then incubated with 5 ug/mL rabbit anti-CHEK2 Antibody (A00277-2) and mouse anti-Beta Tubulin antibody (M01857-3) overnight at 4°C. Cy3 Conjugated Goat Anti-Rabbit IgG (BA1032) and DyLight®488 Conjugated Goat Anti-Mouse IgG (BA1126) were used as secondary antibody at 1:500 dilution and incubated for 30 minutes at 37°C. Visualize using a fluorescence microscope and filter sets appropriate for the label used.

### Submit a product review to [Biocompare.com](https://www.biocompare.com)

Submit a review of this product to [Biocompare.com](https://www.biocompare.com) to receive a \$20 Amazon.com giftcard! Your reviews help your fellow scientists make the right decisions. Thank you for your contribution.



### Anti-CHEK2 Antibody

For Research Use Only. Not for use in diagnostic procedures.