

Anti-IP10 CXCL10 Antibody

Catalog Number: A00278

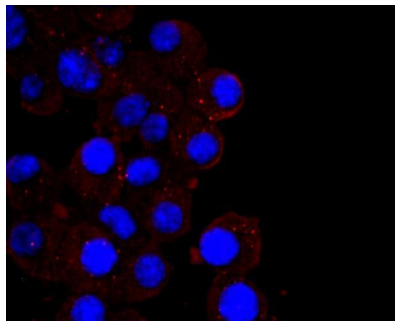
Overview

Product Name	Anti-IP10 CXCL10 Antibody
Reactive Species	Human
Description	Boster Bio Anti-IP10 CXCL10 Antibody catalog # A00278. Tested in WB,ICC/IF,IHC applications. This antibody reacts with Human.
Application	IF, IHC, ICC, WB
Clonality	Polyclonal
Formulation	Rabbit IgG, 1mg/ml in PBS with 0.02% sodium azide, 50% glycerol, pH7.2
Storage Instructions	Store at -20°C for one year. For short term storage and frequent use, store at 4°C for up to one month. Avoid repeated freeze-thaw cycles.
Host	Rabbit
Uniprot ID	P02778

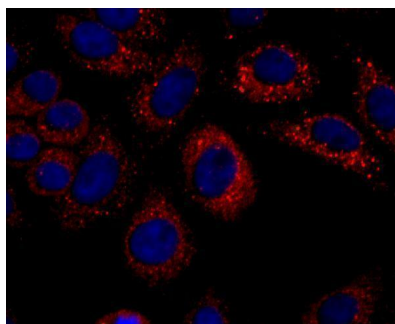
Technical Details

Immunogen	recombinant protein
Isotype	IgG
Form	Liquid
Concentration	1 mg/ml
Purification	ProA affinity purified
Suggested Dilutions	WB: 1:500-1:1,000 ICC: 1:50-1:100 IHC: 1:50-1:200

Anti-IP10 CXCL10 Antibody (A00278) Images



ICC staining IP10 in N2A cells (red). The nuclear counter stain is DAPI (blue). Cells were fixed in paraformaldehyde, permeabilised with 0.25% Triton X100/PBS.



ICC staining IP10 in HepG2 cells (red). The nuclear counter stain is DAPI (blue). Cells were fixed in paraformaldehyde, permeabilised with 0.25% Triton X100/PBS.

1 Publications Citing This Product

1. PubMed ID: 33345267, Qin XJ, Lin X, Xue G, Fan HL, Wang HY, Wu JF, Pei D. CXCL10 is a potential biomarker and associated with immune infiltration in human papillary thyroid cancer. Biosci Rep. 2020 Dec 21; BSR20203459. doi: 10.1042/ BSR20203459. Epub ahead of print. PMID: 33345267.

Visit bosterbio.com/anti-ip10-cxcl10-antibody-a00278-boster.html to see all 1 publications.

Submit a product review to Biocompare.com

Submit a review of this product to Biocompare.com to receive a \$20 Amazon.com giftcard! Your reviews help your fellow scientists make the right decisions. Thank you for your contribution.



Anti-IP10 CXCL10 Antibody

For Research Use Only. Not for use in diagnostic procedures.