

Anti-SREBF1 Antibody

Catalog Number: A00282

About SREBF1

The sterol regulatory element binding transcription factor 1 (SREBF1) is a transcription factor that binds to the sterol regulatory element-1 (SRE1), which is a decamer flanking the low density lipoprotein receptor gene and some genes involved in sterol biosynthesis (1). The related protein SREBF2 also binds SRE1 and activates transcription in an additive fashion to SREBF1 (2). SREBF1 is synthesized as a precursor that is attached to the nuclear membrane and endoplasmic reticulum. Following cleavage, the mature protein translocates to the nucleus and activates transcription by binding to the SRE1 (3). The SREBF1 proteins are important in the regulation of genes involved in lipid metabolism, while SREBF2 has been more closely associated with cholesterol synthesis and accumulation (4).

Overview

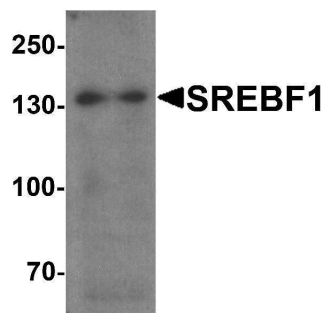
Product Name	Anti-SREBF1 Antibody
Reactive Species	Human, Mouse
Description	Boster Bio Anti-SREBF1 Antibody (Catalog # A00282). Tested in ELISA, WB, IHC-P, IF applications. This antibody reacts with Human, Mouse.
Application	ELISA, IF, IHC-P, WB
Clonality	Polyclonal
Formulation	SREBF1 antibody is supplied in PBS containing 0.02% sodium azide.
Storage Instructions	SREBF1 antibody can be stored at 4°C for three months and -20°C, stable for up to one year.
Host	Rabbit
Uniprot ID	P36956

Technical Details

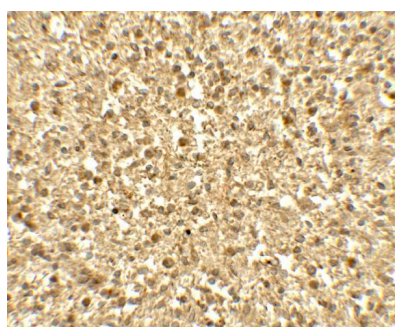
Immunogen	SREBF1 antibody was raised against a 17 amino acid peptide near the center of human SREBF1. The immunogen is located within amino acids 450 - 500 of SREBF1.
Predicted Reactive Species	Bovine
Cross Reactivity	SREBF1 antibody is human and mouse reactive. At least three isoforms of SREBF1 are known to exist. SREBF1 antibody is predicted not to cross-react with SREBF2.
Isotype	IgG
Form	Liquid
Concentration	1 mg/mL

Purification	SREBF1 antibody is affinity chromatography purified via peptide column.
Suggested Dilutions	SREBF1 antibody can be used for detection of SREBF1 by Western blot at 1 - 2 ug/ml. Antibody can also be used for Immunohistochemistry at 5 ug/mL. For Immunofluorescence start at 20 ug/mL. Antibody validated: Western Blot in human samples; Immunohistochemistry in human samples and Immunofluorescence in human samples. All other applications and species not yet tested. Optimal dilutions for each application should be determined by the researcher.

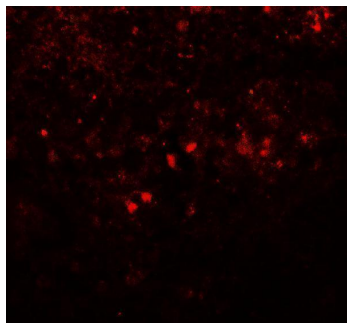
Anti-SREBF1 Antibody (A00282) Images



Western blot analysis of SREBF1 in Daudi cell lysate with SREBF1 antibody at 1 ug/ml.



Immunohistochemistry of SREBF1 in human spleen tissue with SREBF1 antibody at 5 ug/mL.



Immunofluorescence of SREBF1 in human spleen tissue with SREBF1 antibody at 20 ug/mL.

Submit a product review to [Biocompare.com](https://www.biocompare.com)

Submit a review of this product to [Biocompare.com](https://www.biocompare.com) to receive a \$20 Amazon.com giftcard! Your reviews help your fellow scientists make the right decisions. Thank you for your contribution.



Anti-SREBF1 Antibody

For Research Use Only. Not for use in diagnostic procedures.