

## Anti-SREBF1 Antibody

Catalog Number: A00282-2

### About SREBF1

This gene encodes a basic helix-loop-helix-leucine zipper (bHLH-Zip) transcription factor that binds to the sterol regulatory element-1 (SRE1), which is a motif that is found in the promoter of the low density lipoprotein receptor gene and other genes involved in sterol biosynthesis. The encoded protein is synthesized as a precursor that is initially attached to the nuclear membrane and endoplasmic reticulum. Following cleavage, the mature protein translocates to the nucleus and activates transcription. This cleavage is inhibited by sterols. This gene is located within the Smith-Magenis syndrome region on chromosome 17. Alternative promoter usage and splicing result in multiple transcript variants, including SREBP-1a and SREBP-1c, which correspond to RefSeq transcript variants 2 and 3, respectively.

### Overview

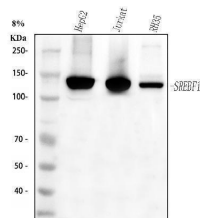
Product Name	Anti-SREBF1 Antibody
Reactive Species	Human, Rat
Description	Boster Bio Anti-SREBF1 Antibody catalog # A00282-2. Tested in WB, IHC, ICC, IF, IP, ELISA applications. This antibody reacts with Human, Rat.
Application	ELISA, IP, IF, IHC, ICC, WB
Clonality	Polyclonal
Formulation	500 ug/ml antibody with PBS, 0.02% NaN <sub>3</sub> , 1 mg stabilizing protein and 50% glycerol *This antibody is supplied in a stabilized formulation. Compatibility with conjugation reactions depends on the chemistry of the conjugation method used. For conjugation methods that are not compatible with the stabilizing components present in this formulation, a carrier-free antibody format is required.
Storage Instructions	12 months from date of receipt at -20°C as supplied. 6 months at 2 to 8°C after reconstitution. Avoid repeated freezing and thawing.
Host	Rabbit
Uniprot ID	P36956

### Technical Details

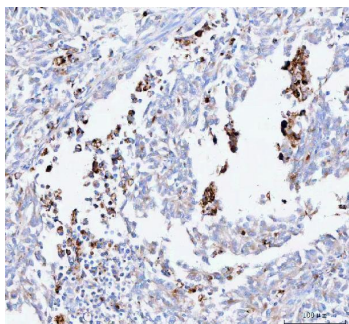
Immunogen	E.coli-derived human SREBF1 recombinant protein (Position: E3-A330).
Form	Liquid
Concentration	500 ug/ml
Purification	Immunogen affinity purified.
Suggested Dilutions	Western blot, 1:500-2000

	Immunohistochemistry, 1:50-400 Immunocytochemistry/Immunofluorescence, 1:50-400 Immunoprecipitation, 1:50 ELISA, 1:100-1000
--	--

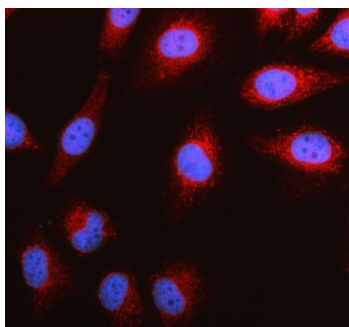
## Anti-SREBF1 Antibody (A00282-2) Images



Western blot analysis of SREBF1 using anti-SREBF1 antibody (A00282-2). Electrophoresis was performed on a 10% SDS-PAGE gel at 80V (Stacking gel) / 120V (Resolving gel) for 2 hours. The sample well of each lane was loaded with 30 ug of sample under reducing conditions. Lane 1: human HepG2 whole cell lysates, Lane 2: human Jurkat whole cell lysates, Lane 3: rat RH-35 whole cell lysates. After electrophoresis, proteins were transferred to a nitrocellulose membrane at 150 mA for 50-90 minutes. Blocked the membrane with 5% non-fat milk/TBS for 1.5 hour at RT. The membrane was incubated with rabbit anti-SREBF1 antigen affinity purified polyclonal antibody (A00282-2) at 1:1000 overnight at 4°C, then washed with TBS-0.1%Tween 3 times with 5 minutes each and probed with a goat anti-rabbit IgG-HRP secondary antibody at a dilution of 1:5000 for 1.5 hour at RT. The signal is developed using an ECL Plus Western Blotting Substrate (Catalog # AR1196-200) with Tanon 5200 system. A specific band was detected for SREBF1 at approximately 122 kDa. The expected band size for SREBF1 is at 122 kDa.



IHC analysis of SREBF1 using anti-SREBF1 antibody (A00282-2). SREBF1 was detected in a paraffin-embedded section of human melanoma tissue. Heat mediated antigen retrieval was performed in EDTA buffer (pH 8.0, epitope retrieval solution). The tissue section was blocked with 10% goat serum. The tissue section was then incubated with 1:100 rabbit anti-SREBF1 Antibody (A00282-2) overnight at 4°C. Peroxidase Conjugated Goat Anti-rabbit IgG was used as secondary antibody and incubated for 30 minutes at 37°C. The tissue section was developed using HRP Conjugated Rabbit IgG Super Vision Assay Kit (Catalog # SV0002) with DAB as the chromogen.



IF analysis of SREBF1 using anti-SREBF1 antibody (A00282-2). SREBF1 was detected in an immunocytochemical section of HeLa cells. Enzyme antigen retrieval was performed using IHC enzyme antigen retrieval reagent (AR0022) for 15 mins. The cells were blocked with 10% goat serum. And then incubated with 1:100 rabbit anti-SREBF1 Antibody (A00282-2) overnight at 4°C. Cy3 Conjugated Goat Anti-Rabbit IgG (BA1032) was used as secondary antibody at 1:500 dilution and incubated for 30 minutes at 37°C. The section was counterstained with DAPI. Visualize using a fluorescence microscope and filter sets appropriate for the label used.

Submit a product review to [Biocompare.com](https://www.biocompare.com)

Submit a review of this product to [Biocompare.com](https://www.biocompare.com) to receive a \$20 Amazon.com giftcard! Your reviews help your fellow scientists make the right decisions. Thank you for your contribution.



**Anti-SREBF1 Antibody**

For Research Use Only. Not for use in diagnostic procedures.