

## Anti-NFkB-p105 (phospho-S927) NFKB1 Antibody

Catalog Number: A00283S927-1

### About NFKB1

HDAC-1 antibody recognizes HDAC1 (also known as HD1, histone deacetylase 1, RPD3, RPD3L1) which belongs to the histone deacetylase/acuc/apha family and is a component of the histone deacetylase complex. Histone acetylation and deacetylation, catalyzed by multisubunit complexes, play a key role in the regulation of eukaryotic gene expression. It also interacts with retinoblastoma tumor-suppressor protein and this complex is a key element in the control of cell proliferation and differentiation. Together with metastasis-associated protein-2, it deacetylates p53 and modulates its effect on cell growth and apoptosis.

### Overview

Product Name	Anti-NFkB-p105 (phospho-S927) NFKB1 Antibody
Reactive Species	Human, Mouse, Rat
Description	Boster Bio Anti-NFkB-p105 (phospho-S927) NFKB1 Antibody catalog # A00283S927-1. Tested in WB,IHC applications. This antibody reacts with Human,Mouse,Rat.
Application	IHC, WB
Clonality	Polyclonal
Formulation	Rabbit IgG, 1mg/ml in PBS with 0.02% sodium azide, 50% glycerol, pH7.2
Storage Instructions	Store at -20°C for one year. For short term storage and frequent use, store at 4°C for up to one month. Avoid repeated freeze-thaw cycles.
Host	Rabbit
Uniprot ID	P19838

### Technical Details

Immunogen	Synthesized peptide derived from human NFkappaB-p105 around the phosphorylation site of S907.
Predicted Reactive Species	Canine, Monkey
Isotype	IgG
Form	Liquid
Concentration	1 mg/ml
Purification	The antibody was affinity-purified from rabbit antiserum by affinity-chromatography using epitope-specific immunogen and the purity is > 95% (by SDS-PAGE).
Suggested Dilutions	Dilute the sample so that the expected range of concentrations fall within the detection range of this kit.

If the expected range of concentration is unknown, a pilot test should be conducted to decide the optimal dilution ratio for your samples.

Some PubMed article(s) citing the expression level of this target are as follows:

Boster Bio's internal QC testing used:

WB: 1:500-1:1000

IHC: 1:50-1:200

## Anti-NFkB-p105 (phospho-S927) NFkB1 Antibody (A00283S927-1) Images

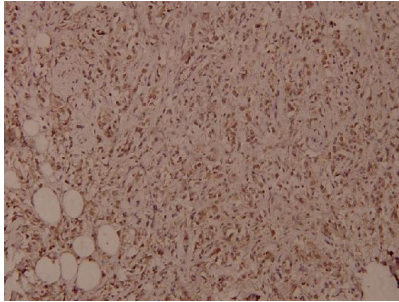


Figure 2. Immunohistochemistry validation of NFkB1 using Anti-NFkB-p105 (phospho-S927) NFkB1 Antibody (A00283S927-1).

Immunohistochemistry (IHC) analyzes of p-NFkB-p105 (S927) pAb in paraffin-embedded human breast carcinoma tissue at 1:100.

For more protocol information of IHC

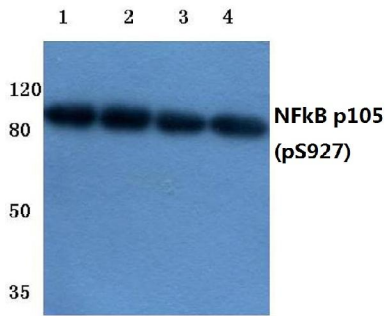


Figure 1. Western blotting validation for Anti-NFkB-p105 (phospho-S927) NFkB1 Antibody A00283S927-1

Western blot (WB) analysis of p-NFkB-p105 (S927) pAb at 1:500 dilution

Lane1:SGC7901 whole cell lysate(40ug)

Lane2:Hela whole cell lysate(40ug)

Lane3:The Spleen tissue lysate of Rat(40ug)

Lane4:The Testis tissue lysate of Mouse(40ug)

Electrophoresis was performed on a SDS-PAGE gel. To determine SDS-PAGE gel concentration

## Submit a product review to Biocompare.com

Submit a review of this product to Biocompare.com to receive a \$20 Amazon.com giftcard! Your reviews help your fellow scientists make the right decisions. Thank you for your contribution.



Anti-NFkB-p105 (phospho-S927) NFkB1 Antibody