

Anti-G6PD Antibody

Catalog Number: A00287-1

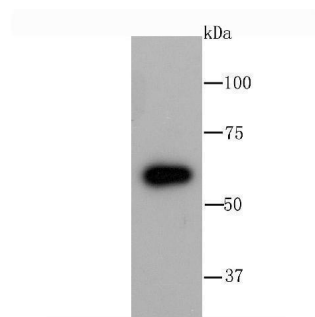
Overview

Product Name	Anti-G6PD Antibody
Reactive Species	Human
Description	Boster Bio Anti-G6PD Antibody catalog # A00287-1. Tested in WB,ICC,IHC,Flow Cytometry applications. This antibody reacts with Human.
Application	Flow Cytometry, IHC, ICC, WB
Clonality	Polyclonal
Formulation	Rabbit IgG, 1mg/ml in PBS with 0.02% sodium azide, 50% glycerol, pH7.2
Storage Instructions	Store at -20°C for one year. For short term storage and frequent use, store at 4°C for up to one month. Avoid repeated freeze-thaw cycles.
Host	Rabbit
Uniprot ID	P11413

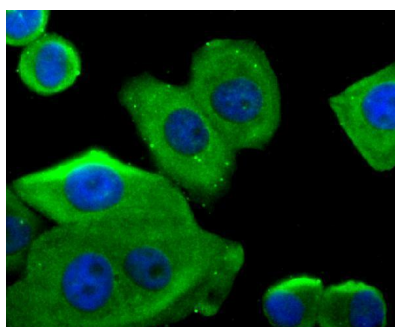
Technical Details

Immunogen	recombinant protein
Isotype	IgG
Form	Liquid
Concentration	1 mg/ml
Purification	ProA affinity purified
Suggested Dilutions	WB: 1:500-1:2,000 ICC: 1:50-1:200 IHC: 1:50-1:200 FC: 1:50-1:100

Anti-G6PD Antibody (A00287-1) Images



Western blot analysis of Glucose 6 Phosphate Dehydrogenase on A549 cell lysate using anti-Glucose 6 Phosphate Dehydrogenase antibody at 1/1,000 dilution.



ICC staining Glucose 6 Phosphate Dehydrogenase in MCF-7 cells (green). The nuclear counter stain is DAPI (blue). Cells were fixed in paraformaldehyde, permeabilised with 0.25% Triton X100/PBS.

Submit a product review to Biocompare.com

Submit a review of this product to Biocompare.com to receive a \$20 Amazon.com giftcard! Your reviews help your fellow scientists make the right decisions. Thank you for your contribution.



Anti-G6PD Antibody

For Research Use Only. Not for use in diagnostic procedures.