

## Anti-MEK1/2 (phospho-S222/226) MAP2K1 Antibody

Catalog Number: A00292S222

### Overview

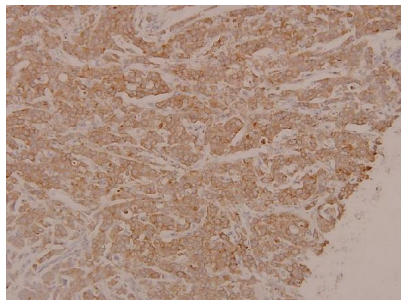
|                      |  |
|----------------------|--|
| Product Name         | Anti-MEK1/2 (phospho-S222/226) MAP2K1 Antibody   |
| Reactive Species     | Human, Mouse, Rat  |
| Description          | Boster Bio Anti-MEK1/2 (phospho-S222/226) MAP2K1 Antibody catalog # A00292S222. Tested in IHC applications. This antibody reacts with Human,Mouse,Rat. |
| Application          | IHC  |
| Clonality            | Polyclonal   |
| Formulation          | Rabbit IgG, 1mg/ml in PBS with 0.02% sodium azide, 50% glycerol, pH7.2   |
| Storage Instructions | Store at -20°C for one year. For short term storage and frequent use, store at 4°C for up to one month. Avoid repeated freeze-thaw cycles.             |
| Host                 | Rabbit   |
| Uniprot ID           | Q02750/P36507  |

### Technical Details

|                     |   |
|---------------------|---|
| Immunogen           | Synthetic phosphopeptide derived from human MEK1 around the phosphorylation site of Serine 222.   |
| Isotype             | IgG   |
| Form                | Liquid  |
| Concentration       | 1 mg/ml   |
| Purification        | The antibody was affinity-purified from rabbit antiserum by affinity-chromatography using epitope-specific immunogen and the purity is > 95% (by SDS-PAGE). |
| Suggested Dilutions | IHC: 1:50-1:200   |

## Anti-MEK1/2 (phospho-S222/226) MAP2K1 Antibody (A00292S222) Images

---



Immunohistochemistry (IHC) analyzes of p-MEK1/2 (S222/226) pAb in paraffin-embedded human breast carcinoma tissue at 1:100.

### Submit a product review to Biocompare.com

---

Submit a review of this product to Biocompare.com to receive a \$20 Amazon.com giftcard! Your reviews help your fellow scientists make the right decisions. Thank you for your contribution.



Anti-MEK1/2 (phospho-S222/226) MAP2K1 Antibody

For Research Use Only. Not for use in diagnostic procedures.