

Anti-CHOP DDIT3 Antibody

Catalog Number: A00311

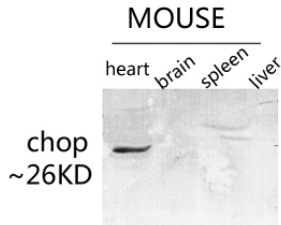
Overview

Product Name	Anti-CHOP DDIT3 Antibody
Reactive Species	Human, Mouse
Description	Boster Bio Anti-CHOP DDIT3 Antibody catalog # A00311. Tested in WB, IHC, IF, ELISA applications. This antibody reacts with Human, Mouse.
Application	ELISA, IF, IHC, WB
Clonality	Polyclonal
Formulation	Liquid in PBS containing 50% glycerol, 0.5% stabilizing protein and 0.02% sodium azide. *This antibody is supplied in a stabilized formulation. Compatibility with conjugation reactions depends on the chemistry of the conjugation method used. For conjugation methods that are not compatible with the stabilizing components present in this formulation, a carrier-free antibody format is required.
Storage Instructions	Store at -20°C for one year. For short term storage and frequent use, store at 4°C for up to one month. Avoid repeated freeze-thaw cycles.
Host	Rabbit
Uniprot ID	P35638

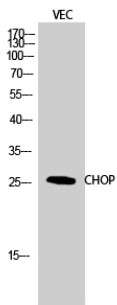
Technical Details

Immunogen	The antiserum was produced against synthesized peptide derived from human CHOP. AA range:15-64
Isotype	IgG
Form	Liquid
Concentration	1 mg/ml
Purification	Immunogen affinity purified
Suggested Dilutions	WB 1:500-1:2000 IHC 1:100-1:300 IF 1:200-1:1000 ELISA 1:5000

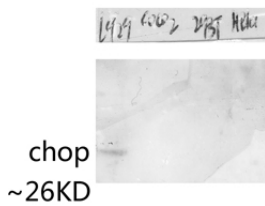
Anti-CHOP DDIT3 Antibody (A00311) Images



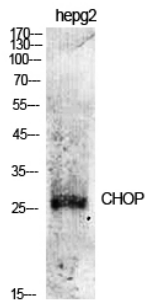
Western Blot (WB) analysis of specific lysis using CHOP Polyclonal antibody.



Western Blot (WB) analysis of VEC cells using CHOP Polyclonal antibody.



Western Blot (WB) analysis of specific lysis using CHOP Polyclonal antibody.



Western Blot (WB) analysis of specific cells using CHOP Polyclonal antibody.

Submit a product review to [Biocompare.com](https://www.biocompare.com)

Submit a review of this product to [Biocompare.com](https://www.biocompare.com) to receive a \$20 Amazon.com giftcard! Your reviews help your fellow scientists make the right decisions. Thank you for your contribution.



Anti-CHOP DDIT3 Antibody

For Research Use Only. Not for use in diagnostic procedures.