

## Anti-BMI-1 Antibody

Catalog Number: A00313

### About BMI1

The transcriptional repressor BMI-1 was first identified as a proto-oncogene frequently activated by Moloney murine leukemia proviral insertions in mice and cooperating with c-myc in the generation of mouse lymphomas. BMI-1 is involved in segment specification, cell growth and maintenance, transcriptional regulation, and chromatin modification. A major target of BMI-1 is the ink4a locus which encodes tumor suppressor proteins p16 and p19Arf, which are important in tumor progression and thought to be critical in cell proliferation and senescence. Recent studies have also shown that BMI-1 is required for the maintenance of adult normal and leukemic stem cells, suggesting that BMI-1 could be an attractive therapeutic target for stem cell proliferation and renewal as well as for anti-cancer strategies.

### Overview

Product Name	Anti-BMI-1 Antibody
Reactive Species	Human, Mouse, Rat
Description	Boster Bio Anti-BMI-1 Antibody (Catalog # A00313). Tested in ELISA, WB, ICC, IF applications. This antibody reacts with Human, Mouse, Rat.
Application	ELISA, IF, ICC, WB
Clonality	Polyclonal
Formulation	BMI-1 Antibody is supplied in PBS containing 0.02% sodium azide.
Storage Instructions	BMI-1 antibody can be stored at 4°C for three months and -20°C, stable for up to one year. Avoid repeated freeze-thaw cycles. Antibodies should not be exposed to prolonged high temperatures.
Host	Rabbit
Uniprot ID	P35226

### Technical Details

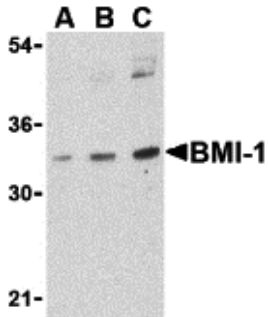
Immunogen	BMI-1 antibody was raised against a peptide corresponding to 15 amino acids near the center of human BMI-1. The immunogen is located within amino acids 140 - 190 of BMI-1.
Predicted Reactive Species	Bovine, Chicken
Isotype	IgG
Form	Liquid
Concentration	1 mg/mL
Purification	BMI-1 Antibody is affinity chromatography purified via peptide column.

**Suggested Dilutions**

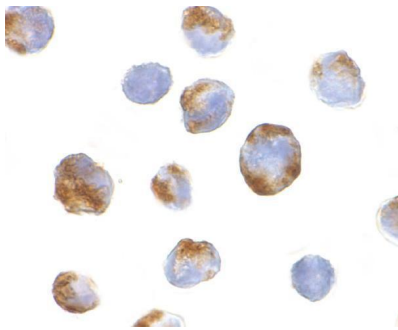
BMI-1 antibody can be used for detection of BMI-1 by Western blot at 0.5 to 2 ug/mL. Antibody can also be used for immunocytochemistry starting at 10 ug/mL. For immunofluorescence start at 20 ug/mL.

Antibody validated: Western Blot in human samples; Immunocytochemistry in human samples and Immunofluorescence in human samples. All other applications and species not yet tested. Optimal dilutions for each application should be determined by the researcher.

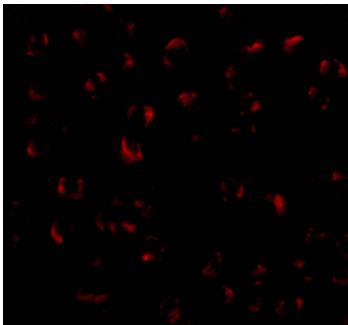
## Anti-BMI-1 Antibody (A00313) Images



Western blot analysis of BMI-1 in K562 cell lysate with BMI-1 antibody at (A) 0.5, (B) 1 and (C) 2 ug/mL.



Immunocytochemistry of BMI-1 in K562 cells with BMI-1 antibody at 10 ug/mL.



Immunofluorescence of BMI-1 in K562 cells with BMI-1 antibody at 20 ug/mL.

### Submit a product review to [Biocompare.com](https://www.biocompare.com)

Submit a review of this product to [Biocompare.com](https://www.biocompare.com) to receive a \$20 Amazon.com giftcard! Your reviews help your fellow scientists make the right decisions. Thank you for your contribution.



### Anti-BMI-1 Antibody

For Research Use Only. Not for use in diagnostic procedures.