

Anti-Lipoprotein lipase LPL Antibody

Catalog Number: A00316

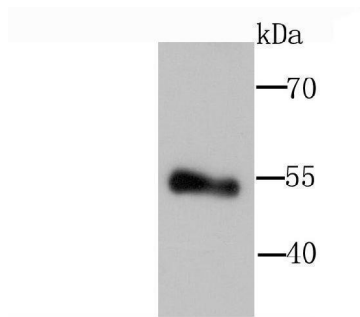
Overview

| | |
|----------------------|--|
| Product Name | Anti-Lipoprotein lipase LPL Antibody |
| Reactive Species | Human |
| Description | Boster Bio Anti-Lipoprotein lipase LPL Antibody catalog # A00316. Tested in WB,IHC applications. This antibody reacts with Human. |
| Application | IHC, WB |
| Clonality | Polyclonal |
| Formulation | Rabbit IgG, 1mg/ml in PBS with 0.02% sodium azide, 50% glycerol, pH7.2 |
| Storage Instructions | Store at -20°C for one year. For short term storage and frequent use, store at 4°C for up to one month. Avoid repeated freeze-thaw cycles. |
| Host | Rabbit |
| Uniprot ID | P06858 |

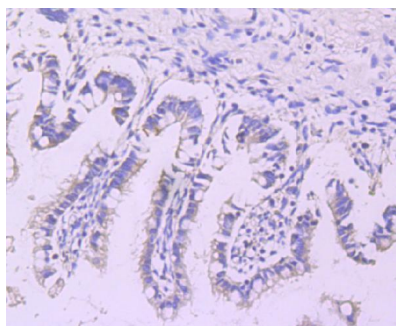
Technical Details

| | |
|---------------------|--------------------------------------|
| Immunogen | recombinant protein |
| Isotype | IgG |
| Form | Liquid |
| Concentration | 1 mg/ml |
| Purification | ProA affinity purified |
| Suggested Dilutions | WB: 1:500-1:1,000 IHC: 1:50-1:200 |

Anti-Lipoprotein lipase LPL Antibody (A00316) Images



Western blot analysis of Lipoprotein lipase on human placenta tissue lysate using anti-Lipoprotein lipase antibody at 1/1,000 dilution.



Immunohistochemical analysis of paraffin-embedded human ileum tissue using anti-Lipoprotein lipase antibody. Counter stained with hematoxylin.

Submit a product review to Biocompare.com

Submit a review of this product to Biocompare.com to receive a \$20 Amazon.com giftcard! Your reviews help your fellow scientists make the right decisions. Thank you for your contribution.



Anti-Lipoprotein lipase LPL Antibody

For Research Use Only. Not for use in diagnostic procedures.