

Anti-HDAC2 Antibody (Center)

Catalog Number: A00325-2

About HDAC2

This gene product belongs to the histone deacetylase family. Histone deacetylases act via the formation of large multiprotein complexes, and are responsible for the deacetylation of lysine residues at the N-terminal regions of core histones (H2A, H2B, H3 and H4). This protein forms transcriptional repressor complexes by associating with many different proteins, including YY1, a mammalian zinc-finger transcription factor. Thus, it plays an important role in transcriptional regulation, cell cycle progression and developmental events.

Overview

Product Name	Anti-HDAC2 Antibody (Center)
Reactive Species	Human
Description	Boster Bio Anti-HDAC2 Antibody (Center) (Catalog # A00325-2). Tested in WB, IF, Flow Cytometry, IHC-P application(s). This antibody reacts with Human.
Application	Flow Cytometry, IF, IHC-P, WB
Clonality	Polyclonal
Formulation	Purified polyclonal antibody supplied in PBS with 0.09% (W/V) sodium azide.
Storage Instructions	Maintain refrigerated at 2-8°C for up to 2 weeks. For long-term storage, store at -20°C in small aliquots to prevent freeze-thaw cycles.
Host	Rabbit
Uniprot ID	Q92769

Technical Details

Immunogen	This HDAC2 antibody is generated from rabbits immunized with a KLH conjugated synthetic peptide between 410-439 amino acids from the Central region of human HDAC2.
Predicted Reactive Species	Chicken, Mouse
Recommended Detection Systems	Boster recommends Enhanced Chemiluminescent Kit with anti-Rabbit IgG (EK1002) for Western blot, and HRP Conjugated anti-Rabbit IgG Super Vision Assay Kit (SV0002-1) for IHC(P).
Cross Reactivity	No cross reactivity with other proteins.
Isotype	Rabbit IgG
Form	Liquid
Purification	This antibody is purified through a protein A column, followed by peptide affinity purification.

Suggested Dilutions

Dilute the sample so that the expected range of concentrations fall within the detection range of this kit.

If the expected range of concentration is unknown, a pilot test should be conducted to decide the optimal dilution ratio for your samples.

Some PubMed article(s) citing the expression level of this target are as follows:

Boster Bio's internal QC testing used:

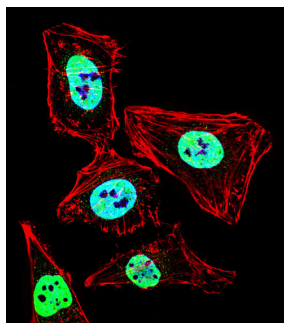
IF: 1:10-1:50

WB: 1:1000

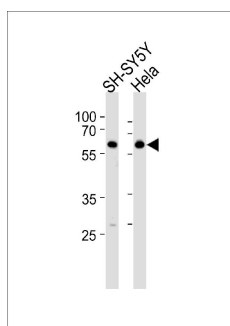
IHC-P: 1:50-1:100

FC: 1:10-1:50

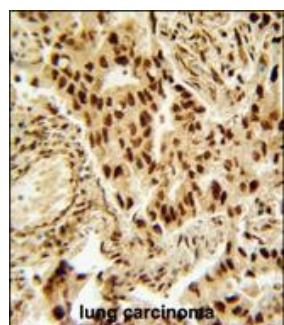
Anti-HDAC2 Antibody (Center) (A00325-2) Images



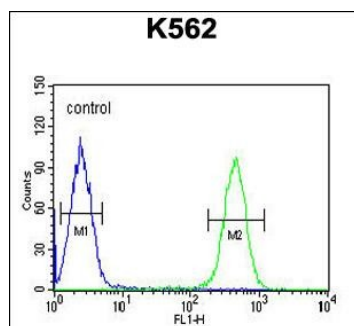
Fluorescent confocal image of HeLa cell stained with HDAC2 Antibody (Center). HeLa cells were fixed with 4% PFA (20 min), permeabilized with Triton X-100 (0.1%, 10 min), then incubated with HDAC2 primary antibody (1:25, 1 h at 37°C). For secondary antibody, Alexa Fluor® 488 conjugated donkey anti-rabbit antibody (green) was used (1:400, 50 min at 37°C). Cytoplasmic actin was counterstained with Alexa Fluor® 555 (red) conjugated Phalloidin at 37°C. Nuclei were counterstained with DAPI (blue) (10 µg/ml, 10 min). HDAC2 immunoreactivity is localized to Nucleus significantly.



HDAC2 Antibody (Center) (Cat. #A00325-2) western blot analysis in SH-SY5Y cell line lysates (35ug/lane). This demonstrates the HDAC2 antibody detected the HDAC2 protein (arrow).



HDAC2 Antibody (Center) (Cat. #A00325-2) immunohistochemistry analysis in formalin fixed and paraffin embedded human lung carcinoma followed by peroxidase conjugation of the secondary antibody and DAB staining. This data demonstrates the use of the HDAC2 Antibody (Center) for immunohistochemistry. Clinical relevance has not been evaluated.



HDAC2 Antibody (Center) (Cat. #A00325-2) flow cytometric analysis of K562 cells (right histogram) compared to a negative control cell (left histogram). FITC-conjugated goat-anti-rabbit secondary antibodies were used for the analysis.

Submit a product review to Biocompare.com

Submit a review of this product to Biocompare.com to receive a \$20 Amazon.com giftcard! Your reviews help your fellow scientists make the right decisions. Thank you for your contribution.



Anti-HDAC2 Antibody (Center)