

Anti-Beclin-1 BECN1 Antibody

Catalog Number: A00327

About BECN1

Autophagy, the process of bulk degradation of cellular proteins through an autophagosomic-lysosomal pathway is important for normal growth control and may be defective in tumor cells. Beclin-1, a coiled-coil Bcl-2-interacting protein homologous to the yeast autophagy gene *apg6*, is a mammalian autophagy gene that can inhibit tumorigenesis and is expressed at reduced levels in human breast carcinoma, suggesting that defects in autophagy proteins may contribute to the development or progression of tumors. Bcl-2 can bind to Beclin-1 and inhibit Beclin-1-dependent autophagy in yeast and mammalian cells, suggesting that Bcl-2 functions as an anti-autophagy protein as well as an anti-apoptotic protein, which helps maintain autophagy at levels that are more compatible with cell survival rather than cell death.

Overview

Product Name	Anti-Beclin-1 BECN1 Antibody
Reactive Species	Human, Mouse
Description	Boster Bio Anti-Beclin-1 BECN1 Antibody (Catalog # A00327). Tested in ELISA, WB, ICC, IF applications. This antibody reacts with Human, Mouse.
Application	ELISA, IF, ICC, WB
Clonality	Polyclonal
Formulation	Beclin-1 Antibody is supplied in PBS containing 0.02% sodium azide.
Storage Instructions	Beclin-1 antibody can be stored at 4°C up to one year. Antibodies should not be exposed to prolonged high temperatures.
Host	Rabbit
Uniprot ID	Q14457

Technical Details

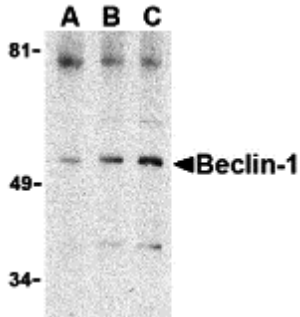
Immunogen	Beclin-1 antibody was raised against a 16 amino acid synthetic peptide from near the carboxy terminus of human Beclin-1. The immunogen is located within the last 50 amino acids of Beclin-1.
Predicted Reactive Species	Bovine, Chicken, Pig, Rat
Isotype	IgG
Form	Liquid
Concentration	1 mg/mL
Purification	Beclin-1 Antibody is affinity chromatography purified via peptide column.

Suggested Dilutions

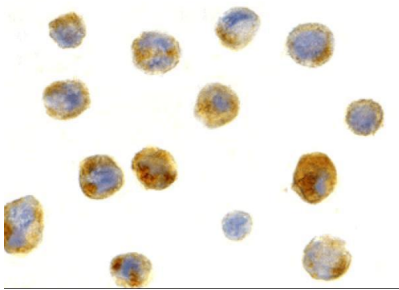
Beclin-1 antibody can be used for the detection of Beclin-1 by Western blot at 0.5 - 2 ug/mL. Antibody can also be used for immunocytochemistry starting at 1 ug/mL. For immunofluorescence start at 2 ug/mL.

Antibody validated: Western Blot in human samples; Immunocytochemistry in human samples and Immunofluorescence in human samples. All other applications and species not yet tested. Optimal dilutions for each application should be determined by the researcher.

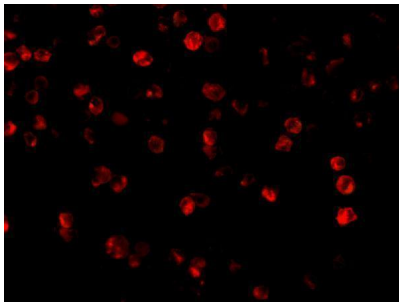
Anti-Beclin-1 BECN1 Antibody (A00327) Images



Western blot analysis of Beclin-1 in A431 cell lysate with Beclin-1 antibody at (A) 0.5, (B) 1 and (C) 2 ug/mL.



Immunocytochemistry staining of A431 cells using Beclin-1 antibody at 1 ug/mL.



Immunofluorescence of Beclin-1 in A431 cells with Beclin-1 antibody at 2 ug/mL.

1 Publications Citing This Product

1. PubMed ID: 31900522, Song L,Yao L,Zhang L,Piao Z,Lu Y.Schizandrol A protects against Abeta1-42-induced autophagy via activation of PI3K/AKT/mTOR pathway in SH-SY5Y cells and primary hippocampal neurons.Naunyn Schmiedebergs Arch Pharmacol.2020 Sep;393(9):1739-1752.doi:10.1007/s00

Visit bosterbio.com/anti-beclin-1-becn1-antibody-a00327-boster.html to see all 1 publications.

Submit a product review to Biocompare.com

Submit a review of this product to Biocompare.com to receive a \$20 Amazon.com giftcard! Your reviews help your fellow scientists make the right decisions. Thank you for your contribution.



Anti-Beclin-1 BECN1 Antibody

For Research Use Only. Not for use in diagnostic procedures.