

Anti-Phospho-eIF4B (S422) JAK1 Antibody

Catalog Number: A00330S422

About JAK1

This is a copper-containing oxidase that functions in the formation of pigments such as melanins and other polyphenolic compounds. Catalyzes the rate-limiting conversions of tyrosine to DOPA, DOPA to DOPA-quinone and possibly 5,6-dihydroxyindole to indole-5,6 quinone.

Patricia Giraldo, Nucleic Acids Res., Nov 2003; 31: 6290 - 6305.

R Halaban, J. Cell Biol., Aug 1983; 97: 480.

Hee-Young Park, J. Biol. Chem., Jun 1999; 274: 16470.

BB Fuller, J. Biol. Chem., Mar 1987; 262: 4024 - 4033.

Overview

| | |
|----------------------|---|
| Product Name | Anti-Phospho-eIF4B (S422) JAK1 Antibody |
| Reactive Species | Human, Mouse |
| Description | Boster Bio Anti-Phospho-eIF4B (S422) JAK1 Antibody catalog # A00330S422. Tested in ELISA, IF, IHC, WB applications. This antibody reacts with Human, Mouse. |
| Application | ELISA, IF, IHC, WB |
| Clonality | Polyclonal |
| Formulation | Liquid in PBS containing 50% glycerol, 0.5% BSA and 0.02% sodium azide. |
| Storage Instructions | Store at -20°C for one year. For short term storage and frequent use, store at 4°C for up to one month. Avoid repeated freeze-thaw cycles. |
| Host | Rabbit |
| Uniprot ID | P23458 |

Technical Details

| | |
|----------------------------|---|
| Immunogen | Synthesized peptide derived from human eIF4B around the phosphorylation site of S422. |
| Predicted Reactive Species | Canine, Monkey |
| Isotype | IgG |
| Form | Liquid |
| Concentration | 1 mg/ml |
| Purification | The antibody was affinity-purified from rabbit antiserum by affinity-chromatography using epitope-specific immunogen. |

Suggested Dilutions

Dilute the sample so that the expected range of concentrations fall within the detection range of this kit.

If the expected range of concentration is unknown, a pilot test should be conducted to decide the optimal dilution ratio for your samples.

Some PubMed article(s) citing the expression level of this target are as follows:

Boster Bio's internal QC testing used:

WB 1:500-1:2000

IHC 1:100-1:300

IF 1:200-1:1000

ELISA 1:40000

Anti-Phospho-eIF4B (S422) JAK1 Antibody (A00330S422) Images

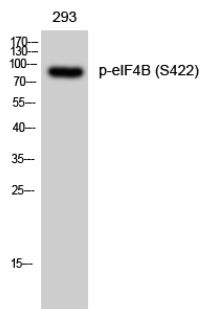


Figure 1. Western blotting validation for Anti-Phospho-eIF4B (S422) JAK1 Antibody A00330S422

Western Blot (WB) analysis of 293 cells using Phospho-eIF4B (S422) polyclonal antibody. Electrophoresis was performed on a SDS-PAGE gel. To determine SDS-PAGE gel concentration

Submit a product review to Biocompare.com

Submit a review of this product to Biocompare.com to receive a \$20 Amazon.com giftcard! Your reviews help your fellow scientists make the right decisions. Thank you for your contribution.



Anti-Phospho-eIF4B (S422) JAK1 Antibody