

## Anti-Menin/MEN1 Picoband® Antibody

Catalog Number: A00331-1

### About MEN1

Menin is a protein that in humans is encoded by the MEN1 gene. It is mapped to 11q13.1. This gene encodes menin, a tumor suppressor associated with a syndrome known as multiple endocrine neoplasia type 1. Menin is a scaffold protein that functions in histone modification and epigenetic gene regulation. It is thought to regulate several pathways and processes by altering chromatin structure through the modification of histones.

### Overview

Product Name	Anti-Menin/MEN1 Picoband® Antibody
Reactive Species	Human, Mouse, Rat
Description	Boster Bio Anti-Menin/MEN1 Picoband® Antibody catalog # A00331-1. Tested in ELISA, IHC, WB applications. This antibody reacts with Human, Mouse, Rat. The brand Picoband indicates this is a premium antibody that guarantees superior quality, high affinity, and strong signals with minimal background in Western blot applications. Only our best-performing antibodies are designated as Picoband, ensuring unmatched performance.
Application	ELISA, IHC, WB
Clonality	Polyclonal
Formulation	Each vial contains 4 mg Trehalose, 0.9 mg NaCl and 0.2 mg Na <sub>2</sub> HPO <sub>4</sub> .
Storage Instructions	Store at -20°C for one year from date of receipt. After reconstitution, at 4°C for one month. It can also be aliquotted and stored frozen at -20°C for six months. Avoid repeated freeze-thaw cycles.
Host	Rabbit
Uniprot ID	O00255

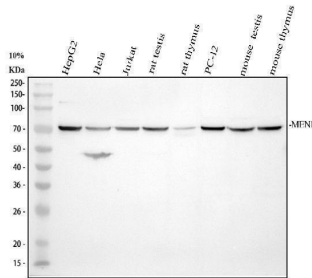
### Technical Details

Immunogen	E.coli-derived human Menin/MEN1 recombinant protein (Position: M1-L615).
Recommended Detection Systems	Boster recommends Enhanced Chemiluminescent Kit with anti-Rabbit IgG (EK1002) for Western blot, and HRP Conjugated anti-Rabbit IgG Super Vision Assay Kit (SV0002-1) for IHC(P).
Cross Reactivity	No cross-reactivity with other proteins.
Isotype	Rabbit IgG
Form	Lyophilized
Concentration	Adding 0.2 ml of distilled water will yield a concentration of 500 ug/ml.
Purification	Immunogen affinity purified.

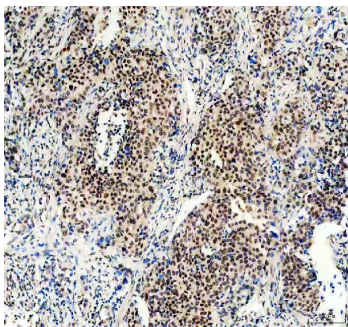
Suggested Dilutions

Western blot, 0.25-0.5ug/ml, Human, Mouse, Rat  
Immunohistochemistry (Paraffin-embedded Section), 2-5ug/ml, Human, Mouse, Rat  
ELISA, 0.1-0.5ug/ml, -

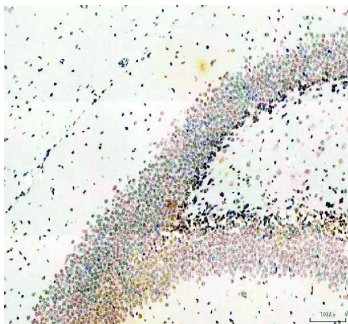
## Anti-Menin/MEN1 Picoband® Antibody (A00331-1) Images



Western blot analysis of Menin/MEN1 using anti-Menin/MEN1 antibody (A00331-1). Electrophoresis was performed on a 10% SDS-PAGE gel at 80V (Stacking gel) / 120V (Resolving gel) for 2 hours. The sample well of each lane was loaded with 30 ug of sample under reducing conditions. Lane 1: human HepG2 whole cell lysates, Lane 2: human Hela whole cell lysates, Lane 3: human Jurkat whole cell lysates, Lane 5: rat testis tissue lysates, Lane 6: rat thymus tissue lysates, Lane 7: rat PC-12 whole cell lysates, Lane 7: mouse testis tissue lysates, Lane 8: mouse thymus tissue lysates. After electrophoresis, proteins were transferred to a nitrocellulose membrane at 150 mA for 50-90 minutes. Blocked the membrane with 5% non-fat milk/TBS for 1.5 hour at RT. The membrane was incubated with rabbit anti-Menin/MEN1 antigen affinity purified polyclonal antibody (A00331-1) at 0.5 ug/mL overnight at 4°C, then washed with TBS-0.1%Tween 3 times with 5 minutes each and probed with a goat anti-rabbit IgG-HRP secondary antibody (Catalog # BA1054) at a dilution of 1:5000 for 1.5 hour at RT. The signal is developed using an ECL Plus Western Blotting Substrate (Catalog # AR1196-200) with Tanon 5200 system. A specific band was detected for Menin/MEN1 at approximately 68-70 kDa. The expected band size for Menin/MEN1 is at 68 kDa.

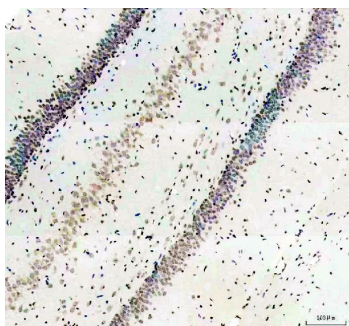


IHC analysis of Menin/MEN1 using anti-Menin/MEN1 antibody (A00331-1). Menin/MEN1 was detected in a paraffin-embedded section of human lung cancer tissue. Heat mediated antigen retrieval was performed in EDTA buffer (pH 8.0, epitope retrieval solution). The tissue section was blocked with 10% goat serum. The tissue section was then incubated with 2 ug/ml rabbit anti-Menin/MEN1 Antibody (A00331-1) overnight at 4°C. Peroxidase Conjugated Goat Anti-rabbit IgG was used as secondary antibody and incubated for 30 minutes at 37°C. The tissue section was developed using HRP Conjugated Rabbit IgG Super Vision Assay Kit (Catalog # SV0002) with DAB as the chromogen.



IHC analysis of Menin/MEN1 using anti-Menin/MEN1 antibody (A00331-1). Menin/MEN1 was detected in a paraffin-embedded section of mouse brain tissue. Heat mediated antigen retrieval was performed in EDTA buffer (pH 8.0, epitope retrieval solution). The tissue section was blocked with 10% goat serum. The tissue section was then incubated with 2 ug/ml rabbit anti-Menin/MEN1 Antibody (A00331-1) overnight at 4°C. Peroxidase Conjugated Goat Anti-rabbit IgG was used as secondary antibody and incubated for 30 minutes at 37°C. The tissue section was developed using HRP Conjugated Rabbit IgG Super Vision Assay Kit (Catalog # SV0002) with DAB as the chromogen.

IHC analysis of Menin/MEN1 using anti-Menin/MEN1 antibody



(A00331-1). Menin/MEN1 was detected in a paraffin-embedded section of rat brain tissue. Heat mediated antigen retrieval was performed in EDTA buffer (pH 8.0, epitope retrieval solution). The tissue section was blocked with 10% goat serum. The tissue section was then incubated with 2 ug/ml rabbit anti-Menin/MEN1 Antibody (A00331-1) overnight at 4°C. Peroxidase Conjugated Goat Anti-rabbit IgG was used as secondary antibody and incubated for 30 minutes at 37°C. The tissue section was developed using HRP Conjugated Rabbit IgG Super Vision Assay Kit (Catalog # SV0002) with DAB as the chromogen.

## Submit a product review to [Biocompare.com](https://www.biocompare.com)

Submit a review of this product to [Biocompare.com](https://www.biocompare.com) to receive a \$20 Amazon.com giftcard! Your reviews help your fellow scientists make the right decisions. Thank you for your contribution.



### Anti-Menin/MEN1 Antibody

For Research Use Only. Not for use in diagnostic procedures.