

Anti-BMP2 Rabbit Polyclonal Antibody

Catalog Number: A00338

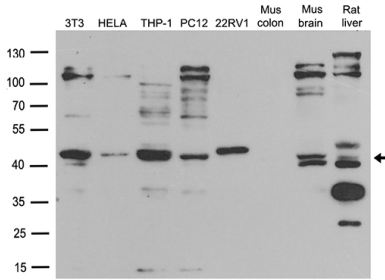
Overview

Product Name	Anti-BMP2 Rabbit Polyclonal Antibody
Reactive Species	Human, Mouse, Rat
Description	Boster Bio Rabbit polyclonal anti-BMP2 Antibody. Catalog# A00338. Tested in WB. This antibody reacts with Human, Mouse, Rat.
Conjugate	Unconjugated
Application	WB
Clonality	Polyclonal
Formulation	PBS with 0.02% sodium azide, 50% glycerol, pH7.3
Storage Instructions	Store at -20°C for one year. For short term storage and frequent use, store at 4°C for up to one month. Avoid repeated freeze-thaw cycles.
Host	Rabbit
Uniprot ID	P12643

Technical Details

Immunogen	Recombinant protein of human BMP2
Isotype	IgG
Concentration	1.4mg/ml
Purification	Purified from the immunized serum by affinity chromatography (Protein A/G)
Suggested Dilutions	WB: 1:1000

Anti-BMP2 Rabbit Polyclonal Antibody (A00338) Images



Western blot analysis of extracts (35ug) from different cell lines or tissues by using anti-BMP2 rabbit polyclonal antibody (A00338).

1 Publications Citing This Product

1. PubMed ID: -, Zhurong Tang,Siyu Chen,Yilu Ni,Rui Zhao,Xiangdong Zhu,Xiao Yang,Xingdong Zhang,Role of Na⁺, K⁺-ATPase ion pump in osteoinduction,Acta Biomaterialia,2021,,ISSN 1742-7061,https://doi.org/10.1016/j.actbio.2021.05.026.

Visit bosterbio.com/anti-bmp2-rabbit-polyclonal-antibody-a00338-boster.html to see all 1 publications.

Submit a product review to Biocompare.com

Submit a review of this product to Biocompare.com to receive a \$20 Amazon.com giftcard! Your reviews help your fellow scientists make the right decisions. Thank you for your contribution.



Anti-BMP2 Rabbit Polyclonal Antibody

For Research Use Only. Not for use in diagnostic procedures.