

## Anti-BAP1 Antibody Picoband™

Catalog Number: A00345-1

### About BAP1

BAP1, also known as BRCA1-associated protein-1, contains an acidic region, a highly charged C-terminal region, and 2 putative nuclear localization signals. BAP1 is a novel ubiquitin hydrolase which binds to the BRCA1 RING finger and enhances BRCA1-mediated cell growth suppression. BAP1 is expressed as a 4-kb mRNA in all human tissues, and mapped to 3p21.3.

### Overview

Product Name	Anti-BAP1 Antibody Picoband™
Reactive Species	Human, Mouse, Rat
Description	Boster Bio Anti-BAP1 Antibody Picoband™ catalog # A00345-1. Tested in ELISA, WB applications. This antibody reacts with Human, Mouse, Rat.
Application	ELISA, WB
Clonality	Polyclonal
Formulation	Each vial contains 4mg Trehalose, 0.9mg NaCl, 0.2mg Na <sub>2</sub> HPO <sub>4</sub> , 0.05mg NaN <sub>3</sub> .
Storage Instructions	Store at -20°C for one year from date of receipt. After reconstitution, at 4°C for one month. It can also be aliquotted and stored frozen at -20°C for six months. Avoid repeated freeze-thaw cycles.
Host	Rabbit
Uniprot ID	Q92560

### Technical Details

Immunogen	E. coli-derived human BAP1 recombinant protein (Position: M1-E278).
Predicted Reactive Species	Chicken
Recommended Detection Systems	Boster recommends Enhanced Chemiluminescent Kit with anti-Rabbit IgG (EK1002) for Western blot, and HRP Conjugated anti-Rabbit IgG Super Vision Assay Kit (SV0002-1) for IHC(P).
Cross Reactivity	No cross-reactivity with other proteins.
Isotype	Rabbit IgG
Form	Lyophilized
Concentration	Adding 0.2 ml of distilled water will yield a concentration of 500 ug/ml.
Purification	Immunogen affinity purified.

**Suggested Dilutions**

Dilute the sample so that the expected range of concentrations fall within the detection range of this kit.

If the expected range of concentration is unknown, a pilot test should be conducted to decide the optimal dilution ratio for your samples.

Some PubMed article(s) citing the expression level of this target are as follows:

Boster Bio's internal QC testing used:

Western blot, 0.1-0.5ug/ml

Direct ELISA, 0.1-0.5ug/ml

## Anti-BAP1 Antibody Picoband™ (A00345-1) Images

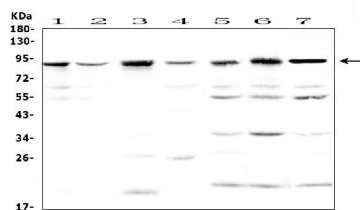


Figure 1. Western blot analysis of BAP1 using anti-BAP1 antibody (A00345-1).

Electrophoresis was performed on a 5-20% SDS-PAGE gel at 70V (Stacking gel) / 90V (Resolving gel) for 2-3 hours. The sample well of each lane was loaded with 50ug of sample under reducing conditions.

Lane 1: human Hela whole cell lysates,  
Lane 2: human HepG2 whole cell lysates,  
Lane 3: human 22RV1 whole cell lysates,  
Lane 4: human MCF-7 whole cell lysates,  
Lane 5: rat thymus tissue lysates,  
Lane 6: rat kidney tissue lysates,  
Lane 7: mouse kidney tissue lysates.

After Electrophoresis, proteins were transferred to a Nitrocellulose membrane at 150mA for 50-90 minutes. Blocked the membrane with 5% Non-fat Milk/ TBS for 1.5 hour at RT. The membrane was incubated with rabbit anti-BAP1 antigen affinity purified polyclonal antibody (Catalog # A00345-1) at 0.5 ug/mL overnight at 4°C, then washed with TBS-0.1%Tween 3 times with 5 minutes each and probed with a goat anti-rabbit IgG-HRP secondary antibody at a dilution of 1:10000 for 1.5 hour at RT. The signal is developed using an Enhanced Chemiluminescent detection (ECL) kit (Catalog # EK1002) with Tanon 5200 system. A specific band was detected for BAP1 at approximately 88KD. The expected band size for BAP1 is at 80KD.

## Submit a product review to Biocompare.com

Submit a review of this product to Biocompare.com to receive a \$20 Amazon.com giftcard! Your reviews help your fellow scientists make the right decisions. Thank you for your contribution.



Anti-BAP1 Antibody™