

Anti-PDGF-B (L48) Antibody

Catalog Number: A00348-1

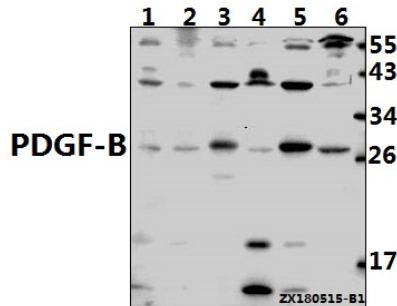
Overview

Product Name	Anti-PDGF-B (L48) Antibody
Reactive Species	Human, Mouse, Rat
Description	Boster Bio Anti-PDGF-B (L48) Antibody catalog # A00348-1. Tested in WB,IHC applications. This antibody reacts with Human,Mouse,Rat.
Application	IHC, WB
Clonality	Polyclonal
Formulation	Rabbit IgG, 1mg/ml in PBS with 0.02% sodium azide, 50% glycerol, pH7.2
Storage Instructions	Store at -20°C for one year. For short term storage and frequent use, store at 4°C for up to one month. Avoid repeated freeze-thaw cycles.
Host	Rabbit
Uniprot ID	P01127

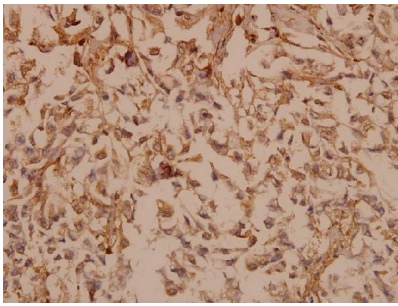
Technical Details

Immunogen	Synthetic peptide, corresponding to amino acids 21-70 of Human PDGF-B.
Isotype	IgG
Form	Liquid
Concentration	1 mg/ml
Purification	The antibody was affinity-purified from rabbit antiserum by affinity-chromatography using epitope-specific immunogen and the purity is > 95% (by SDS-PAGE).
Suggested Dilutions	WB: 1:500-1:1000 IHC: 1:50-1:200

Anti-PDGF-B (L48) Antibody (A00348-1) Images



Western blot (WB) analysis of PDGF-B (L48) pAb at 1:500 dilution Lane1:HepG2 whole cell lysate(40ug) Lane2:3T3-L1 whole cell lysate(40ug) Lane3:H9C2 whole cell lysate(40ug) Lane4:H1792 whole cell lysate(40ug) Lane5:Hela whole cell lysate(40ug) Lane6:HEK293T whole cell lysate(40ug)



Immunohistochemistry (IHC) analyzes of PDGF-B (L48) pAb in paraffin-embedded human breast carcinoma tissue at 1:50.

1 Publications Citing This Product

1. PubMed ID: 22977585, Hong Z, Hong H, Chen H, Wang Z, Hong D. Exp Ther Med. 2011 Sep;2(5):837-841. Epub 2011 Jun 14. Investigation Of The Protective Effect Of Erythropoietin On Spinal Cord Injury In Rats.

Visit bosterbio.com/anti-pdgf-b-l48-antibody-a00348-1-boster.html to see all 1 publications.

Submit a product review to Biocompare.com

Submit a review of this product to Biocompare.com to receive a \$20 Amazon.com giftcard! Your reviews help your fellow scientists make the right decisions. Thank you for your contribution.



Anti-PDGF-B (L48) Antibody

For Research Use Only. Not for use in diagnostic procedures.