

Anti-Leptin Receptor/LEPR Antibody

Catalog Number: A00350

About LEPR

Leptin receptor, also known as LEP-R or OB-R is a protein that in humans is encoded by the LEPR gene. The protein encoded by this gene belongs to the gp130 family of cytokine receptors that are known to stimulate gene transcription via activation of cytosolic STAT proteins. This protein is a receptor for leptin (an adipocyte-specific hormone that regulates body weight), and is involved in the regulation of fat metabolism, as well as in a novel hematopoietic pathway that is required for normal lymphopoiesis. Mutations in this gene have been associated with obesity and pituitary dysfunction. Alternatively spliced transcript variants encoding different isoforms have been described for this gene.

Overview

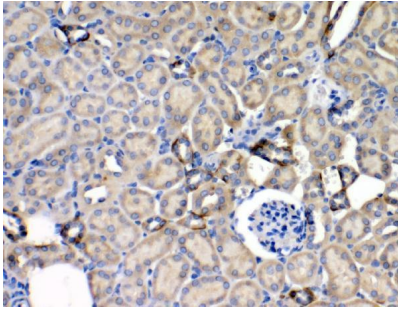
Product Name	Anti-Leptin Receptor/LEPR Antibody
Reactive Species	Human, Mouse, Rat
Description	Boster Bio Anti-Leptin Receptor/LEPR Antibody catalog # A00350. Tested in ELISA, IHC applications. This antibody reacts with Human, Mouse, Rat.
Application	ELISA, IHC
Clonality	Polyclonal
Formulation	Each vial contains antibody formulated with stabilizing components, 0.9 mg NaCl, 0.2 mg Na ₂ HPO ₄ , and 0.05 mg Na ₃ N. *This antibody is supplied in a stabilized formulation. Compatibility with conjugation reactions depends on the chemistry of the conjugation method used. For conjugation methods that are not compatible with the stabilizing components present in this formulation, a carrier-free antibody format is required.
Storage Instructions	Store at -20°C for one year from date of receipt. After reconstitution, at 4°C for one month. It can also be aliquotted and stored frozen at -20°C for six months. Avoid repeated freeze-thaw cycles.
Host	Rabbit
Uniprot ID	P48357

Technical Details

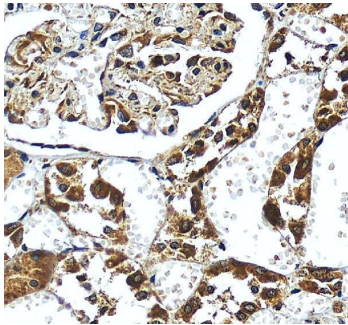
Immunogen	A synthetic peptide corresponding to a sequence at the C-terminus of human Leptin Receptor, different from the related mouse sequence by nine amino acids, and from the related rat sequence by eight amino acids.
Recommended Detection Systems	Boster recommends HRP Conjugated anti-Rabbit IgG Super Vision Assay Kit (SV0002-1) for IHC(P).
Cross Reactivity	No cross-reactivity with other proteins
Isotype	Rabbit IgG

Form	Lyophilized
Concentration	Adding 0.2 ml of distilled water will yield a concentration of 500 ug/ml.
Purification	Immunogen affinity purified.
Suggested Dilutions	Immunohistochemistry (Paraffin-embedded Section), 0.5-1ug/ml, Mouse, Rat, Human ELISA, 0.1-0.5ug/ml, -

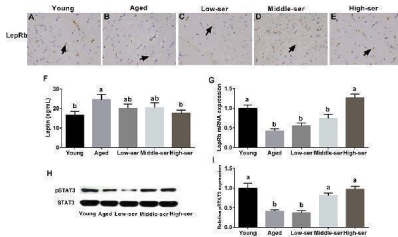
Anti-Leptin Receptor/LEPR Antibody (A00350) Images



IHC analysis of Leptin Receptor/LEPR using anti-Leptin Receptor/LEPR antibody (A00350). Leptin Receptor/LEPR was detected in paraffin-embedded section of mouse kidney tissue. Heat mediated antigen retrieval was performed in EDTA buffer (pH8.0, epitope retrieval solution). The tissue section was blocked with 10% goat serum. The tissue section was then incubated with 1ug/ml rabbit anti-Leptin Receptor/LEPR Antibody (A00350) overnight at 4°C. Biotinylated goat anti-rabbit IgG was used as secondary antibody and incubated for 30 minutes at 37°C. The tissue section was developed using Streptavidin-Biotin-Complex (SABC) (Catalog # SA1022) with DAB as the chromogen.

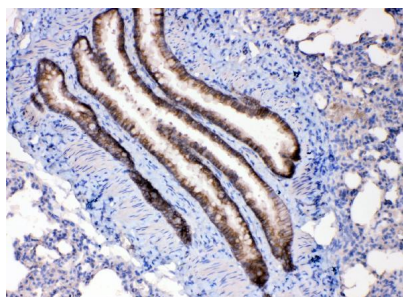


IHC analysis of LEPR using anti-LEPR antibody (A00350). LEPR was detected in a paraffin-embedded section of human kidney tissue. Heat mediated antigen retrieval was performed in EDTA buffer (pH 8.0, epitope retrieval solution). The tissue section was blocked with 10% goat serum. The tissue section was then incubated with 2 ug/ml rabbit anti-LEPR Antibody (A00350) overnight at 4°C. Peroxidase Conjugated Goat Anti-rabbit IgG was used as secondary antibody and incubated for 30 minutes at 37°C. The tissue section was developed using HRP Conjugated Rabbit IgG Super Vision Assay Kit (Catalog # SV0002) with DAB as the chromogen.



Effects of long-term L-serine administration on the leptin signaling pathway in aging mice. (A-E) LepRb expression as determined by immunohistochemistry; (F) leptin content in the hypothalamus; (G) relative LepRb mRNA expression; (H,I) relative pSTAT3 protein expression. Aged, untreated control mice; Low-ser, mice fed with 0.1% (wt/vol) L-serine dissolved in the drinking water; Middle-ser, mice fed with 0.2% (wt/vol) L-serine dissolved in the drinking water; High-ser, mice fed with 0.5% (wt/vol) L-serine dissolved in the drinking water. Young, adult male mice at the age of 18 months. Arrow (yellow), expression of LepRb protein; LepRb, leptin receptor. Values are expressed as mean \pm SEM, n = 3 for the statistical analysis of western blotting data and n = 8 for the statistical analysis of other data; a, b Means of the bars with different letters were significantly different among groups (p < 0.05). Index in PubMed under a CC BY license. PMID: 30190704

IHC analysis of Leptin Receptor/LEPR using anti-Leptin Receptor/LEPR antibody (A00350). Leptin Receptor/LEPR was detected in paraffin-embedded section of rat lung tissue. Heat mediated antigen retrieval was performed in EDTA buffer (pH8.0, epitope retrieval solution). The tissue section was blocked with 10% goat serum. The tissue section was then incubated with 1ug/ml rabbit anti-Leptin Receptor/LEPR Antibody (A00350) overnight at 4°C. Biotinylated goat anti-



rabbit IgG was used as secondary antibody and incubated for 30 minutes at 37°C. The tissue section was developed using Streptavidin-Biotin-Complex (SABC) (Catalog # SA1022) with DAB as the chromogen.

2 Publications Citing This Product

1. PubMed ID: -, Immunohistochemical Localization of Leptin and Leptin-Receptor Proteins in Different Tissues of Chinese Alligator, Alligator sinensis. HuaBin Zhang, YaSen Li, Tao Pan, Peng Yan, En Li, Hui Xue, XiaoBing Wu
2. PubMed ID: 26529315, The Influence of LepR Tyrosine Site Mutations on Mouse Ovary Development and Related Gene Expression Changes

Visit bosterbio.com/anti-leptin-receptor-antibody-a00350-boster.html to see all 2 publications.

Submit a product review to Biocompare.com

Submit a review of this product to Biocompare.com to receive a \$20 Amazon.com giftcard! Your reviews help your fellow scientists make the right decisions. Thank you for your contribution.



Anti-Leptin Receptor/LEPR Antibody

For Research Use Only. Not for use in diagnostic procedures.