

Anti-LepRb/OBRb Antibody

Catalog Number: A00350-1

Overview

Product Name	Anti-LepRb/OBRb Antibody
Reactive Species	Rat
Description	Boster Bio Anti-LepRb/OBRb Antibody (Catalog# A00350-1). Tested in WB, IHC, IF applications. This antibody reacts with Rat.
Application	IF, IHC, WB
Clonality	Polyclonal
Storage Instructions	Store at 4°C for short term. Aliquot and store at -20°C for long term. Avoid repeated freeze-thaw cycles.
Host	Chicken
Uniprot ID	P48357

Technical Details

Immunogen	Recombinant Protein
Isotype	Chicken IgY
Form	Liquid
Purification	Affinity Purified
Suggested Dilutions	Dilute the sample so that the expected range of concentrations fall within the detection range of this kit. If the expected range of concentration is unknown, a pilot test should be conducted to decide the optimal dilution ratio for your samples. Some PubMed article(s) citing the expression level of this target are as follows:

Anti-LepRb/OBRb Antibody (A00350-1) Images

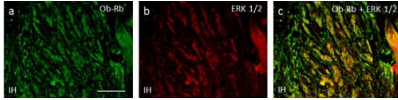


Figure 1. Immunofluorescent staining data of LEPR using Anti-LepRb/OBRb Antibody (A00350-1).

Fluorescent (a-c) photomicrographs showing the effect of IH on Ob-Rb (a) and ERK 1/2 (b) expression in carotid body glomus cells. Note that Ob-Rb and ERK 1/2 are co-expressed in the same cells (c). Calibration mark in (a) represents 100 μ m and applies to (a-c).

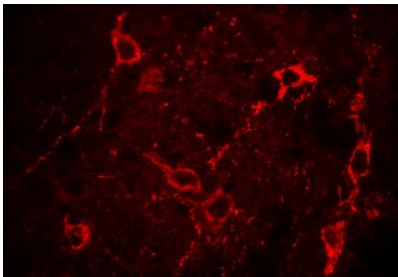


Figure 2. Immunofluorescent staining data of LEPR using Anti-LepRb/OBRb Antibody (A00350-1).

OB-Rb staining of 40 μ m free-floating rat brainstem fixed with 4% paraformaldehyde. 1:50 dilution using Rhodamine Red-X

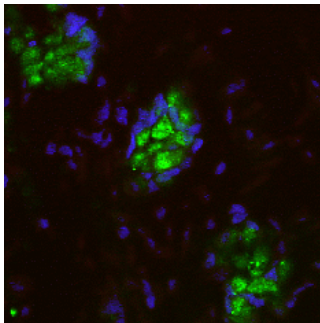


Figure 3. Immunofluorescent staining data of LEPR using Anti-LepRb/OBRb Antibody (A00350-1).

LepRb staining in rat intestine. Detection was done using anti-chicken Cy2 conjugated antibodies (green color). Cell nuclei were counterstained with DAPI (blue color). Working dilution is 1:200-1:600.

Submit a product review to Biocompare.com

Submit a review of this product to Biocompare.com to receive a \$20 Amazon.com giftcard! Your reviews help your fellow scientists make the right decisions. Thank you for your contribution.



Anti-LepRb/OBRb Antibody