

Anti-Leptin Receptor LEPR Antibody

Catalog Number: A00350-4

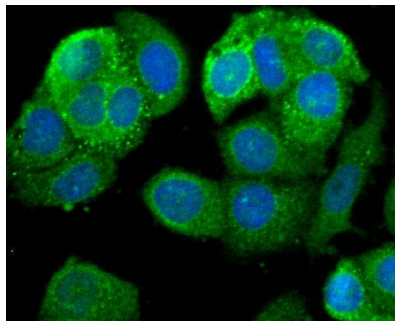
Overview

Product Name	Anti-Leptin Receptor LEPR Antibody
Reactive Species	Human, Mouse, Rat
Description	Boster Bio Anti-Leptin Receptor LEPR Antibody catalog # A00350-4. Tested in WB,ICC,IHC,Flow Cytometry applications. This antibody reacts with Human,Mouse,Rat.
Application	Flow Cytometry, IHC, ICC, WB
Clonality	Polyclonal
Formulation	Rabbit IgG, 1mg/ml in PBS with 0.02% sodium azide, 50% glycerol, pH7.2
Storage Instructions	Store at -20°C for one year. For short term storage and frequent use, store at 4°C for up to one month. Avoid repeated freeze-thaw cycles.
Host	Rabbit
Uniprot ID	P48357

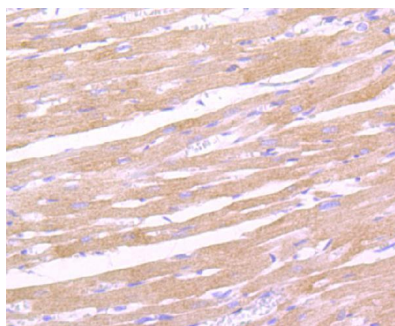
Technical Details

Immunogen	recombinant protein
Isotype	IgG
Form	Liquid
Concentration	1 mg/ml
Purification	ProA affinity purified
Suggested Dilutions	FC: 1:50-1:100 WB: 1:500-1:1,000

Anti-Leptin Receptor LEPR Antibody (A00350-4) Images



ICC staining Leptin Receptor in MCF-7 cells (green). The nuclear counter stain is DAPI (blue). Cells were fixed in paraformaldehyde, permeabilised with 0.25% Triton X100/PBS.



Immunohistochemical analysis of paraffin-embedded rat heart tissue using anti-Leptin Receptor antibody. Counter stained with hematoxylin.

1 Publications Citing This Product

1. PubMed ID: 33128919, Srinivasan G, Parida S, Pavithra S, Panigrahi M, Sahoo M, Singh TU, Madhu CL, Manickam K, Shyamkumar TS, Kumar D, Mishra SK. Leptin receptor stimulation in late pregnant mouse uterine tissue inhibits spontaneous contractions by increasing NO and cGMP. Cytokine. 2021

Visit bosterbio.com/anti-leptin-receptor-lepr-antibody-a00350-4-boster.html to see all 1 publications.

Submit a product review to Biocompare.com

Submit a review of this product to Biocompare.com to receive a \$20 Amazon.com giftcard! Your reviews help your fellow scientists make the right decisions. Thank you for your contribution.



Anti-Leptin Receptor LEPR Antibody

For Research Use Only. Not for use in diagnostic procedures.