

Anti-GRB2 Antibody (Y209)

Catalog Number: A00351

About GRB2

GRB2 binds the epidermal growth factor receptor and contains one SH2 domain and two SH3 domains. Its two SH3 domains direct complex formation with proline-rich regions of other proteins, and its SH2 domain binds tyrosine phosphorylated sequences. This gene is similar to the Sem5 gene of C.elegans, which is involved in the signal transduction pathway.

Overview

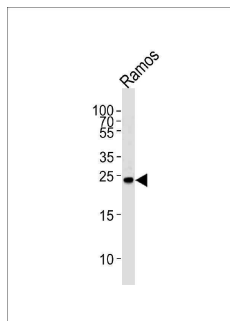
Product Name	Anti-GRB2 Antibody (Y209)
Reactive Species	Human
Description	Boster Bio Anti-GRB2 Antibody (Y209) (Catalog # A00351). Tested in WB, IHC-P application(s). This antibody reacts with Human.
Application	IHC-P, WB
Clonality	Polyclonal
Formulation	Purified polyclonal antibody supplied in PBS with 0.09% (W/V) sodium azide.
Storage Instructions	Maintain refrigerated at 2-8°C for up to 2 weeks. For long-term storage, store at -20°C in small aliquots to prevent freeze-thaw cycles.
Host	Rabbit
Uniprot ID	P62993

Technical Details

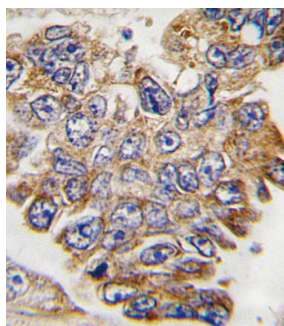
Immunogen	This GRB2 antibody is generated from rabbits immunized with a KLH conjugated synthetic peptide between 187-216 amino acids from human GRB2.
Predicted Reactive Species	Chicken, Mouse, Rat, Xenopus
Recommended Detection Systems	Boster recommends Enhanced Chemiluminescent Kit with anti-Rabbit IgG (EK1002) for Western blot, and HRP Conjugated anti-Rabbit IgG Super Vision Assay Kit (SV0002-1) for IHC(P).
Cross Reactivity	No cross reactivity with other proteins.
Isotype	Rabbit IgG
Form	Liquid
Purification	This antibody is purified through a protein A column, followed by peptide affinity purification.
Suggested Dilutions	WB: 1:1000

IHC-P: 1:10-1:50

Anti-GRB2 Antibody (Y209) (A00351) Images



Western blot analysis of lysate from Ramos cell line, using GRB2 Antibody (pY209). A00351 was diluted at 1:1000. A goat anti-rabbit IgG H&L (HRP) at 1:5000 dilution was used as the secondary antibody. Lysate at 35ug.



Formalin-fixed and paraffin-embedded human lung carcinoma tissue reacted with GRB2 Antibody (Y209), which was peroxidase-conjugated to the secondary antibody, followed by DAB staining. This data demonstrates the use of this antibody for immunohistochemistry; clinical relevance has not been evaluated.

Submit a product review to [Biocompare.com](https://www.biocompare.com)

Submit a review of this product to [Biocompare.com](https://www.biocompare.com) to receive a \$20 Amazon.com giftcard! Your reviews help your fellow scientists make the right decisions. Thank you for your contribution.



Anti-GRB2 Antibody (Y209)

For Research Use Only. Not for use in diagnostic procedures.