

## Anti-CEA Antibody (Center)

Catalog Number: A00356-1

### About CEACAM5

CEA is a cell surface glycoprotein that plays a role in cell adhesion and in intracellular signaling. It is a receptor for E.coli Dr adhesins.

### Overview

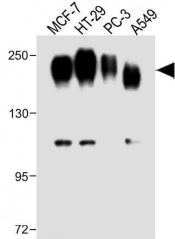
Product Name	Anti-CEA Antibody (Center)
Reactive Species	Human
Description	Boster Bio Anti-CEA Antibody (Center) (Catalog # A00356-1). Tested in IHC-P-Leica, Flow Cytometry, WB application(s). This antibody reacts with Human.
Application	Flow Cytometry, WB, IHC-P-Leica
Clonality	Polyclonal
Formulation	Purified polyclonal antibody supplied in PBS with 0.09% (W/V) sodium azide.
Storage Instructions	Maintain refrigerated at 2-8°C for up to 2 weeks. For long-term storage, store at -20°C in small aliquots to prevent freeze-thaw cycles.
Host	Rabbit
Uniprot ID	P06731

### Technical Details

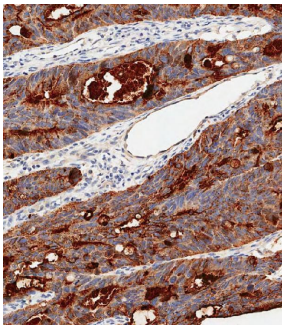
Immunogen	This CEA antibody is generated from rabbits immunized with a KLH conjugated synthetic peptide between 400-429 amino acids from the Central region of human CEA.
Predicted Reactive Species	Chicken, Mouse, Rat, Xenopus
Recommended Detection Systems	Boster recommends Enhanced Chemiluminescent Kit with anti-Rabbit IgG (EK1002) for Western blot, and HRP Conjugated anti-Rabbit IgG Super Vision Assay Kit (SV0002-1) for IHC(P).
Cross Reactivity	No cross reactivity with other proteins.
Isotype	Rabbit IgG
Form	Liquid
Purification	This antibody is purified through a protein A column, followed by peptide affinity purification.
Suggested Dilutions	WB: 1:1000 IHC-P-Leica: 1:500 FC: 1:10-1:50



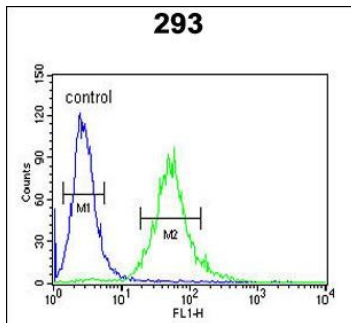
## Anti-CEA Antibody (Center) (A00356-1) Images



All lanes : Anti-CEA Antibody (Center) at 1:1000 dilution  
Lane 1: MCF-7 whole cell lysate  
Lane 2: HT-29 whole cell lysate  
Lane 3: PC-3 whole cell lysate  
Lane 4: A549 whole cell lysate  
Lysates/proteins at 20 µg per lane. Secondary Goat Anti-Rabbit IgG, (H+L), Peroxidase conjugated at 1/10000 dilution. Predicted band size : 77 kDa  
Blocking/Dilution buffer: 5% NFDM/TBST.



Immunohistochemical analysis of paraffin-embedded Human colon carcinoma tissue using A00356-1 performed on the Leica® BOND RXm. Tissue was fixed with formaldehyde at room temperature, antigen retrieval was by heat mediation with a EDTA buffer (pH9.0). Samples were incubated with primary antibody (1:500) for 1 hours at room temperature. A undiluted biotinylated CRF Anti-Polyvalent HRP Polymer antibody was used as the secondary antibody.



CEA Antibody (Center) (Cat. #A00356-1) flow cytometric analysis of 293 cells (right histogram) compared to a negative control cell (left histogram). FITC-conjugated goat-anti-rabbit secondary antibodies were used for the analysis.

**Submit a product review to Biocompare.com**

Submit a review of this product to Biocompare.com to receive a \$20 Amazon.com giftcard! Your reviews help your fellow scientists make the right decisions. Thank you for your contribution.



Anti-CEA Antibody (Center)

For Research Use Only. Not for use in diagnostic procedures.