

## Anti-ETV6 Antibody (N-term)

Catalog Number: A00361-2

### About ETV6

ETV6 is an ETS family transcription factor. This protein contains two functional domains: a N-terminal pointed (PNT) domain that is involved in protein-protein interactions with itself and other proteins, and a C-terminal DNA-binding domain.

### Overview

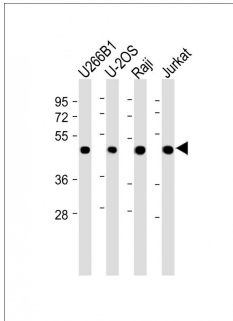
Product Name	Anti-ETV6 Antibody (N-term)
Reactive Species	Human
Description	Boster Bio Anti-ETV6 Antibody (N-term) (Catalog # A00361-2). Tested in WB, Flow Cytometry, IHC-P application(s). This antibody reacts with Human.
Application	Flow Cytometry, IHC-P, WB
Clonality	Polyclonal
Formulation	Purified polyclonal antibody supplied in PBS with 0.09% (W/V) sodium azide.
Storage Instructions	Maintain refrigerated at 2-8°C for up to 2 weeks. For long-term storage, store at -20°C in small aliquots to prevent freeze-thaw cycles.
Host	Rabbit
Uniprot ID	P41212

### Technical Details

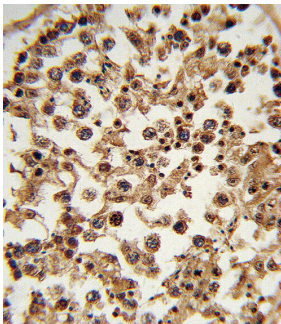
Immunogen	This ETV6 antibody is generated from rabbits immunized with a KLH conjugated synthetic peptide between 84-111 amino acids from the N-terminal region of human ETV6.
Predicted Reactive Species	Bovine, Mouse
Recommended Detection Systems	Boster recommends Enhanced Chemiluminescent Kit with anti-Rabbit IgG (EK1002) for Western blot, and HRP Conjugated anti-Rabbit IgG Super Vision Assay Kit (SV0002-1) for IHC(P).
Cross Reactivity	No cross reactivity with other proteins.
Isotype	Rabbit IgG
Form	Liquid
Purification	This antibody is purified through a protein A column, followed by peptide affinity purification.
Suggested Dilutions	WB: 1:2000 IHC-P: 1:10-1:50

FC: 1:10-1:50

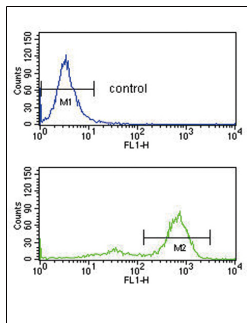
## Anti-ETV6 Antibody (N-term) (A00361-2) Images



All lanes : Anti-ETV6 Antibody (N-term) at 1:2000 dilution  
Lane 1: U266B1 whole cell lysate  
Lane 2: U-2OS whole cell lysate  
Lane 3: Raji whole cell lysate  
Lane 4: Jurkat whole cell lysate  
Lysates/proteins at 20 µg per lane.  
Secondary Goat Anti-Rabbit IgG, (H+L), Peroxidase conjugated at 1/10000 dilution. Predicted band size : 53 kDa  
Blocking/Dilution buffer: 5% NFD/MTBST.



Formalin-fixed and paraffin-embedded human testis tissue reacted with ETV6 Antibody (N-term), which was peroxidase-conjugated to the secondary antibody, followed by DAB staining. This data demonstrates the use of this antibody for immunohistochemistry; clinical relevance has not been evaluated.



ETV6 Antibody (N-term) flow cytometry analysis of K562 cells (bottom histogram) compared to a negative control cell (top histogram). FITC-conjugated goat-anti-rabbit secondary antibodies were used for the analysis.

### Submit a product review to Biocompare.com

Submit a review of this product to Biocompare.com to receive a \$20 Amazon.com giftcard! Your reviews help your fellow scientists make the right decisions. Thank you for your contribution.



Anti-ETV6 Antibody (N-term)

For Research Use Only. Not for use in diagnostic procedures.