

Anti-Protein capicua homolog CIC Antibody

Catalog Number: A00385

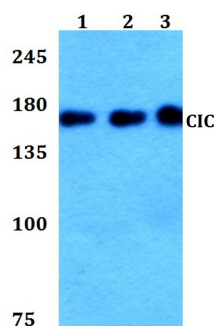
Overview

| | |
|----------------------|--|
| Product Name | Anti-Protein capicua homolog CIC Antibody |
| Reactive Species | Human, Mouse, Rat |
| Description | Boster Bio Anti-Protein capicua homolog CIC Antibody catalog # A00385. Tested in WB applications. This antibody reacts with Human,Mouse,Rat. |
| Application | WB |
| Clonality | Polyclonal |
| Formulation | Rabbit IgG, 1mg/ml in PBS with 0.02% sodium azide, 50% glycerol, pH7.2 |
| Storage Instructions | Store at -20°C for one year. For short term storage and frequent use, store at 4°C for up to one month. Avoid repeated freeze-thaw cycles. |
| Host | Rabbit |
| Uniprot ID | Q96RK0 |

Technical Details

| | |
|---------------------|---|
| Immunogen | A synthetic peptide corresponding to residues in Human CIC. |
| Cross Reactivity | Does not cross-react with eNOS or nNOS. |
| Isotype | IgG |
| Form | Liquid |
| Concentration | 1 mg/ml |
| Purification | The antibody was affinity-purified from rabbit antiserum by affinity-chromatography using epitope-specific immunogen and the purity is > 95% (by SDS-PAGE). |
| Suggested Dilutions | WB: 1:500-1:1000 |

Anti-Protein capicua homolog CIC Antibody (A00385) Images



Western blot (WB) analysis of CIC polyclonal antibody at 1:500 dilution Lane1:HEK293T whole cell lysate Lane2:Raw264.7 whole cell lysate Lane3:PC12 whole cell lysate

Submit a product review to Biocompare.com

Submit a review of this product to Biocompare.com to receive a \$20 Amazon.com giftcard! Your reviews help your fellow scientists make the right decisions. Thank you for your contribution.



Anti-Protein capicua homolog CIC Antibody

For Research Use Only. Not for use in diagnostic procedures.