

Anti-C/EBP Alpha (phospho-S193) Cebpa Antibody

Catalog Number: A00386S193

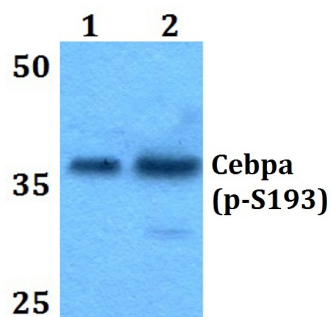
Overview

Product Name	Anti-C/EBP Alpha (phospho-S193) Cebpa Antibody
Reactive Species	Mouse, Rat
Description	Boster Bio Anti-C/EBP Alpha (phospho-S193) Cebpa Antibody catalog # A00386S193. Tested in WB applications. This antibody reacts with Mouse,Rat.
Application	WB
Clonality	Polyclonal
Formulation	Rabbit IgG, 1mg/ml in PBS with 0.02% sodium azide, 50% glycerol, pH7.2
Storage Instructions	Store at -20°C for one year. For short term storage and frequent use, store at 4°C for up to one month. Avoid repeated freeze-thaw cycles.
Host	Rabbit
Uniprot ID	P53566/P05554

Technical Details

Immunogen	Synthetic phosphopeptide derived from mouse C/EBP alpha around the phosphorylation site of Serine 193.
Cross Reactivity	Does not cross-react with eNOS or nNOS.
Isotype	IgG
Form	Liquid
Concentration	1 mg/ml
Purification	The antibody was affinity-purified from rabbit antiserum by affinity-chromatography using epitope-specific immunogen and the purity is > 95% (by SDS-PAGE).
Suggested Dilutions	WB: 1:500-1:1000

Anti-C/EBP Alpha (phospho-S193) Cebpa Antibody (A00386S193) Images



Western blot (WB) analysis of p-C/EBP alpha (S193) polyclonal antibody at 1:500 dilution Lane2:Raw264.7 cell lysate treated with PMA(100nM,15mins) Lane3:H9C2 ccell lysate treated with PMA(100nM,15mins)

Submit a product review to Biocompare.com

Submit a review of this product to Biocompare.com to receive a \$20 Amazon.com giftcard! Your reviews help your fellow scientists make the right decisions. Thank you for your contribution.



Anti-C/EBP Alpha (phospho-S193) Cebpa Antibody

For Research Use Only. Not for use in diagnostic procedures.