

Anti-C/EBP Alpha (phospho-S21) CEBPA Antibody

Catalog Number: A00386S21

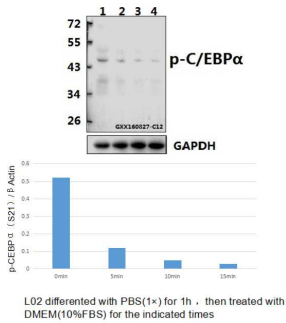
Overview

Product Name	Anti-C/EBP Alpha (phospho-S21) CEBPA Antibody
Reactive Species	Human, Mouse, Rat
Description	Boster Bio Anti-C/EBP Alpha (phospho-S21) CEBPA Antibody catalog # A00386S21. Tested in WB,IHC applications. This antibody reacts with Human,Mouse,Rat.
Application	IHC, WB
Clonality	Polyclonal
Formulation	Rabbit IgG, 1mg/ml in PBS with 0.02% sodium azide, 50% glycerol, pH7.2
Storage Instructions	Store at -20°C for one year. For short term storage and frequent use, store at 4°C for up to one month. Avoid repeated freeze-thaw cycles.
Host	Rabbit
Uniprot ID	P49715

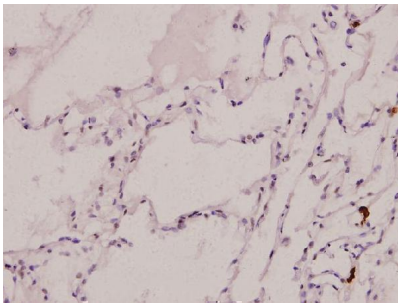
Technical Details

Immunogen	Synthetic phosphopeptide derived from human C/EBP alpha around the phosphorylation site of Serine 21.
Cross Reactivity	Does not cross-react with eNOS or nNOS.
Isotype	IgG
Form	Liquid
Concentration	1 mg/ml
Purification	The antibody was affinity-purified from rabbit antiserum by affinity-chromatography using epitope-specific immunogen and the purity is > 95% (by SDS-PAGE).
Suggested Dilutions	WB: 1:500-1:1000 IHC: 1:50-1:200

Anti-C/EBP Alpha (phospho-S21) CEBPA Antibody (A00386S21) Images



Western blot (WB) analysis of C/EBP alpha (phospho-S21) polyclonal antibody at 1:500 dilution Lane1:L02 whole cell lysate Lane2:L02 treated with PBS(1xPBS,PH7.4) for 1 hour then treated with DMEM(10%FBS) for 5 minutes whole cell lysate Lane3:L02 treated with PBS(1xPBS,PH7.4) for 1 hour then treated with DMEM(10%FBS) for 10 minutes whole cell lysate Lane4:L02 treated with PBS(1xPBS,PH7.4) for 1 hour then treated with DMEM(10%FBS) for 15 minutes whole cell lysate



Immunohistochemistry (IHC) analyzes of p-C/EBP alpha (S21) pAb in paraffin-embedded human lung carcinoma tissue at 1:100.

Submit a product review to Biocompare.com

Submit a review of this product to Biocompare.com to receive a \$20 Amazon.com giftcard! Your reviews help your fellow scientists make the right decisions. Thank you for your contribution.



Anti-C/EBP Alpha (phospho-S21) CEBPA Antibody

For Research Use Only. Not for use in diagnostic procedures.