

## Anti-Phospho-C/EBP alpha (T226) CEBPA Antibody

Catalog Number: A00386T226

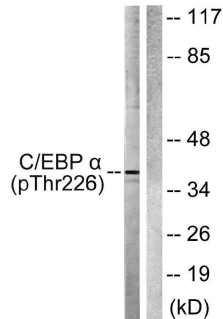
### Overview

Product Name	Anti-Phospho-C/EBP alpha (T226) CEBPA Antibody
Reactive Species	Human, Monkey, Mouse, Rat
Description	Boster Bio Anti-Phospho-C/EBP alpha (T226) CEBPA Antibody catalog # A00386T226. Tested in WB, ELISA applications. This antibody reacts with Human, Mouse, Rat, Monkey.
Application	ELISA, WB
Clonality	Polyclonal
Formulation	Liquid in PBS containing 50% glycerol, 0.5% stabilizing protein and 0.02% sodium azide. *This antibody is supplied in a stabilized formulation. Compatibility with conjugation reactions depends on the chemistry of the conjugation method used. For conjugation methods that are not compatible with the stabilizing components present in this formulation, a carrier-free antibody format is required.
Storage Instructions	Store at -20°C for one year. For short term storage and frequent use, store at 4°C for up to one month. Avoid repeated freeze-thaw cycles.
Host	Rabbit
Uniprot ID	P49715

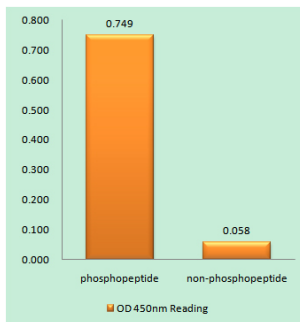
### Technical Details

Immunogen	The antiserum was produced against synthesized peptide derived from human C/EBP-alpha around the phosphorylation site of Thr226. AA range:192-241
Cross Reactivity	Does not cross-react with eNOS or nNOS.
Isotype	IgG
Form	Liquid
Concentration	1 mg/ml
Purification	The antibody was affinity-purified from rabbit antiserum by affinity-chromatography using epitope-specific immunogen.
Suggested Dilutions	WB 1:500-1:2000 ELISA 1:10000

## Anti-Phospho-C/EBP alpha (T226) CEBPA Antibody (A00386T226) Images



Western blot analysis of lysates from COS7 cells treated with EGF 200ng/ml 30', using C/EBP-alpha (Phospho-Thr226) Antibody. The lane on the right is blocked with the phospho peptide.



Enzyme-Linked Immunosorbent Assay (Phospho-ELISA) for Immunogen Phosphopeptide (Phospho-left) and Non-Phosphopeptide (Phospho-right), using C/EBP-alpha (Phospho-Thr226) Antibody

### Submit a product review to Biocompare.com

Submit a review of this product to Biocompare.com to receive a \$20 Amazon.com giftcard! Your reviews help your fellow scientists make the right decisions. Thank you for your contribution.



Anti-Phospho-C/EBP alpha (T226) CEBPA Antibody

For Research Use Only. Not for use in diagnostic procedures.