

Anti-GSTP1 Antibody (Center)

Catalog Number: A00394-2

About GSTP1

Glutathione S-transferases (GSTs) are a family of enzymes that play an important role in detoxification by catalyzing the conjugation of many hydrophobic and electrophilic compounds with reduced glutathione. Based on their biochemical, immunologic, and structural properties, the soluble GSTs are categorized into 4 main classes: alpha, mu, pi, and theta. This GST family member is a polymorphic gene encoding active, functionally different GSTP1 variant proteins that are thought to function in xenobiotic metabolism and play a role in susceptibility to cancer, and other diseases.

Overview

| | |
|----------------------|---|
| Product Name | Anti-GSTP1 Antibody (Center) |
| Reactive Species | Human, Mouse |
| Description | Boster Bio Anti-GSTP1 Antibody (Center) (Catalog # A00394-2). Tested in WB, IF, Flow Cytometry, IHC-P application(s). This antibody reacts with Human, Mouse. |
| Application | Flow Cytometry, IF, IHC-P, WB |
| Clonality | Polyclonal |
| Formulation | Purified polyclonal antibody supplied in PBS with 0.09% (W/V) sodium azide. |
| Storage Instructions | Maintain refrigerated at 2-8°C for up to 2 weeks. For long-term storage, store at -20°C in small aliquots to prevent freeze-thaw cycles. |
| Host | Rabbit |
| Uniprot ID | P09211 |

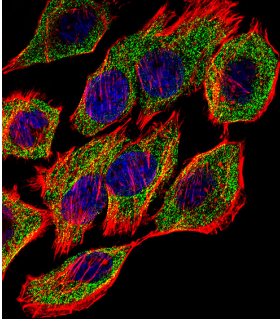
Technical Details

| | |
|-------------------------------|--|
| Immunogen | This GSTP1 antibody is generated from rabbits immunized with a KLH conjugated synthetic peptide between 97-126 amino acids from the Central region of human GSTP1. |
| Predicted Reactive Species | Bovine, Mouse |
| Recommended Detection Systems | Boster recommends Enhanced Chemiluminescent Kit with anti-Rabbit IgG (EK1002) for Western blot, and HRP Conjugated anti-Rabbit IgG Super Vision Assay Kit (SV0002-1) for IHC(P). |
| Cross Reactivity | No cross reactivity with other proteins. |
| Isotype | Rabbit IgG |
| Form | Liquid |
| Purification | This antibody is purified through a protein A column, followed by peptide affinity purification. |

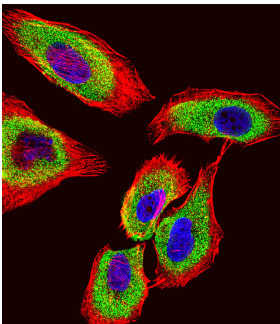
Suggested Dilutions

IF: 1:10-1:50
WB: 1:1000
IHC-P: 1:50-1:100
FC: 1:10-1:50
IHC: 1:2000

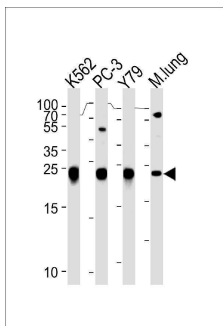
Anti-GSTP1 Antibody (Center) (A00394-2) Images



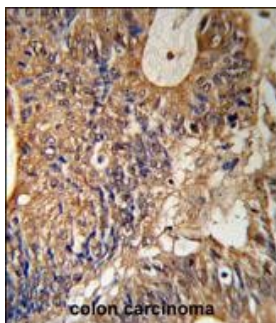
Fluorescent confocal image of A549 cell stained with GSTP1 Antibody (Center). A549 cells were fixed with 4% PFA (20 min), permeabilized with Triton X-100 (0.1%, 10 min), then incubated with GSTP1 primary antibody (1:25, 1 h at 37°C). For secondary antibody, Alexa Fluor® 488 conjugated donkey anti-rabbit antibody (green) was used (1:400, 50 min at 37°C). Cytoplasmic actin was counterstained with Alexa Fluor® 555 (red) conjugated Phalloidin at 37°C. Nuclei were counterstained with DAPI (blue) (10 µg/ml, 10 min). GSTP1 immunoreactivity is localized to Cytoplasm and Mitochondria significantly.



Fluorescent confocal image of A549 cell stained with GSTP1 Antibody (Center) (Cat#A00394-2). A549 cells were fixed with 4% PFA (20 min), permeabilized with Triton X-100 (0.1%, 10 min), then incubated with GSTP1 primary antibody (1:25, 1 h at 37°C). For secondary antibody, Alexa Fluor® 488 conjugated donkey anti-rabbit antibody (green) was used (1:400, 50 min at 37°C). Cytoplasmic actin was counterstained with Alexa Fluor® 555 (red) conjugated Phalloidin at 37°C. Nuclei were counterstained with DAPI (blue) (10 µg/ml, 10 min). GSTP1 immunoreactivity is localized to Cytoplasm significantly.

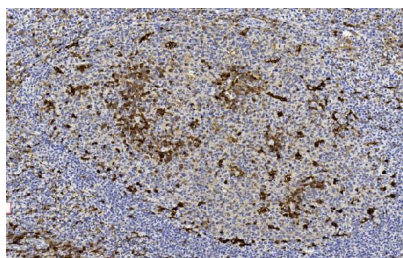
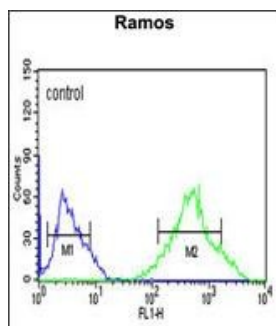


GSTP1 Antibody (Center) (Cat. # A00394-2) western blot analysis in K562,PC-3,Y79 cell line and mouse lung tissue lysates (35ug/lane). This demonstrates the GSTP1 antibody detected the GSTP1 protein (arrow).



GSTP1 Antibody (Center) IHC analysis in formalin fixed and paraffin embedded human colon carcinoma followed by peroxidase conjugation of the secondary antibody and DAB staining. This data demonstrates the use of the GSTP1 Antibody (Center) for immunohistochemistry. Clinical relevance has not been evaluated.

GSTP1 Antibody (Center) (Cat. #A00394-2) flow cytometric analysis of Ramos cells (right histogram) compared to a negative control cell (left histogram). FITC-conjugated goat-anti-rabbit secondary antibodies were used for the analysis.



Immunohistochemical analysis of paraffin-embedded Human tonsil section using Pink1 (Cat#A00394-2). A00394-2 was diluted at 1:2000 dilution. A undiluted biotinylated goat polyvalent antibody was used as the secondary, followed by DAB staining.

Submit a product review to [Biocompare.com](https://www.biocompare.com)

Submit a review of this product to [Biocompare.com](https://www.biocompare.com) to receive a \$20 Amazon.com giftcard! Your reviews help your fellow scientists make the right decisions. Thank you for your contribution.



Anti-GSTP1 Antibody (Center)

For Research Use Only. Not for use in diagnostic procedures.