

Anti-MIP-1 alpha CCL3 Antibody

Catalog Number: A00405

About CCL3

Mouse MIP-1alpha, or Ccl3, of the intercrine beta (chemokine CC family) is a secreted cytokine with inflammatory, pyrogenic and chemokinetic properties. It is expressed in lung, spleen, and pancreas, and has a potent chemotactic activity for eosinophils. Ccl3 binding to a high-affinity receptor activates calcium release in neutrophils.

Overview

Product Name	Anti-MIP-1 alpha CCL3 Antibody
Reactive Species	Mouse
Description	Boster Bio Anti-MIP-1 alpha CCL3 Antibody (Catalog # A00405). Tested in WB applications. This antibody reacts with Mouse.
Application	ELISA, WB
Clonality	Polyclonal
Formulation	0.02 M Potassium Phosphate, 0.15 M Sodium Chloride, pH 7.2
Storage Instructions	Store vial at 4°C prior to restoration. For extended storage aliquot contents and freeze at -20°C or below. Avoid cycles of freezing and thawing. Centrifuge product if not completely clear after standing at room temperature. This product is stable for several weeks at 4°C as an undiluted liquid. Dilute only prior to immediate use. Expiration date is six (6) months from date of opening. (Ship at ambient temperature.)
Host	Rabbit
Uniprot ID	P10855

Technical Details

Immunogen	This IgG fraction antibody was prepared from rabbit antiserum after repeated immunizations with recombinant truncated mouse MIP-1alpha protein produced in E.coli.
Predicted Reactive Species	S. Cerevisiae
Cross Reactivity	No cross reactivity with other proteins.
Isotype	IgG
Form	Lyophilized
Concentration	1.0 mg/mL by UV absorbance at 280 nm
Purification	This product is an IgG fraction antibody purified from monospecific antiserum by a multi-step

process which includes delipidation, salt fractionation and ion exchange chromatography followed by extensive dialysis against the buffer stated above. This antibody is specific for mouse MIP-1alpha protein. Cross-reactivity with MIP-1alpha from other sources has not been determined.

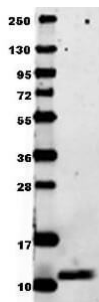
Suggested Dilutions

ELISA: 1:10,000

WB: 1:1000

This purified antibody has been tested in western blotting and is suitable in ELISA. Specific conditions for reactivity should be optimized by the end user. Expect a band approximately 7-8 kDa in size corresponding to the mature 92 amino acid mouse MIP-1alpha/Ccl3 protein by western blotting in appropriate cell lysate or extract.

Anti-MIP-1 alpha CCL3 Antibody (A00405) Images



Anti-mouse MIP-1a in western blot shows detection of recombinant mouse MIP-1a/Ccl3 raised in E.coli. Recombinant truncated (0.1 μ g, expect \sim 8kDa) protein was loaded onto and resolved by SDS-PAGE, then transferred to nitrocellulose. The membrane was blocked with 1% BSA in TBST for 30 min at RT, followed by incubation with Boster's, Inc. Anti-Mouse MIP-1a/Ccl3. After washing, membrane was probed with secondary antibody Dylight™ 649 Conjugated Anti-Rabbit IgG (H&L) (Goat) Antibody diluted 1:20,000 in blocking buffer for 30 min. at RT. Data was collected using Bio-Rad VersaDoc® 4000 MP imaging system.

Submit a product review to [Biocompare.com](https://www.biocompare.com)

Submit a review of this product to [Biocompare.com](https://www.biocompare.com) to receive a \$20 Amazon.com giftcard! Your reviews help your fellow scientists make the right decisions. Thank you for your contribution.



Anti-MIP-1 alpha CCL3 Antibody

For Research Use Only. Not for use in diagnostic procedures.