

## Anti-Ccl3 Antibody

Catalog Number: A00405-3

### About Ccl3

Macrophage inflammatory protein-1 alpha (MIP-1 alpha), also called CCL3, LD78. The cDNA for CCL3 predicts a mature peptide of 69 amino acids with a molecular mass of 7,889 daltons. CCL3 is a member of a newly identified superfamily of small inducible proteins involved in inflammatory responses, wound healing and tumorigenesis. CCL3 is a chemokine that has pro-inflammatory and stem cell inhibitory activities in vitro. It constitutes an important second signal for mast cell degranulation in the conjunctiva in vivo and consequently for acute-phase disease.

### Overview

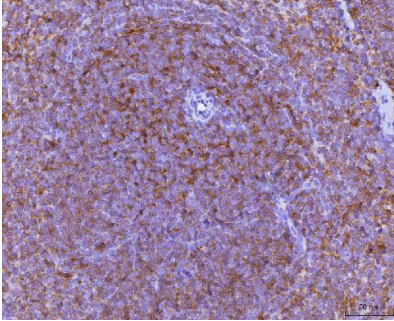
Product Name	Anti-Ccl3 Antibody
Reactive Species	Mouse, Rat
Description	Boster Bio Anti-Ccl3 Antibody catalog # A00405-3. Tested in ELISA, IHC applications. This antibody reacts with Mouse, Rat.
Application	ELISA, IHC
Clonality	Polyclonal
Formulation	Each vial contains 4 mg Trehalose, 0.9 mg NaCl, 0.2 mg Na <sub>2</sub> HPO <sub>4</sub> .
Storage Instructions	At -20°C for one year from date of receipt. After reconstitution, at 4°C for one month. It can also be aliquotted and stored frozen at -20°C for six months. Avoid repeated freezing and thawing.
Host	Rabbit
Uniprot ID	P10855

### Technical Details

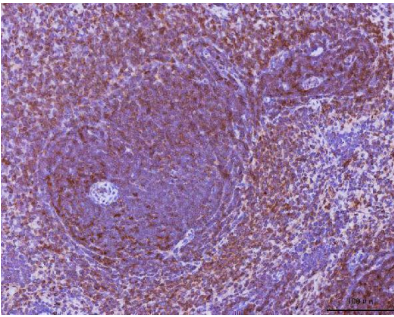
Immunogen	E.coli-derived mouse Ccl3 recombinant protein (Position: A24-A92).
Recommended Detection Systems	Boster recommends HRP Conjugated anti-Rabbit IgG Super Vision Assay Kit (SV0002-1) for IHC(P).
Cross Reactivity	No cross-reactivity with other proteins.
Isotype	Rabbit IgG
Form	Lyophilized
Concentration	Adding 0.2 ml of distilled water will yield a concentration of 500 ug/ml.
Purification	Immunogen affinity purified.
Suggested Dilutions	Immunohistochemistry(Paraffin-embedded Section), 2-5 ug/ml, Mouse, Rat ELISA, 0.1-0.5 ug/ml, -

--	--

## Anti-Ccl3 Antibody (A00405-3) Images



IHC analysis of Ccl3 using anti-Ccl3 antibody (A00405-3). Ccl3 was detected in a paraffin-embedded section of mouse spleen tissue. Heat mediated antigen retrieval was performed in EDTA buffer (pH 8.0, epitope retrieval solution). The tissue section was blocked with 10% goat serum. The tissue section was then incubated with 2 ug/ml rabbit anti-Ccl3 Antibody (A00405-3) overnight at 4°C. Peroxidase Conjugated Goat Anti-rabbit IgG was used as secondary antibody and incubated for 30 minutes at 37°C. The tissue section was developed using HRP Conjugated Rabbit IgG Super Vision Assay Kit (Catalog # SV0002) with DAB as the chromogen.



IHC analysis of Ccl3 using anti-Ccl3 antibody (A00405-3). Ccl3 was detected in a paraffin-embedded section of rat spleen tissue. Heat mediated antigen retrieval was performed in EDTA buffer (pH 8.0, epitope retrieval solution). The tissue section was blocked with 10% goat serum. The tissue section was then incubated with 2 ug/ml rabbit anti-Ccl3 Antibody (A00405-3) overnight at 4°C. Peroxidase Conjugated Goat Anti-rabbit IgG was used as secondary antibody and incubated for 30 minutes at 37°C. The tissue section was developed using HRP Conjugated Rabbit IgG Super Vision Assay Kit (Catalog # SV0002) with DAB as the chromogen.

## Submit a product review to Biocompare.com

Submit a review of this product to Biocompare.com to receive a \$20 Amazon.com giftcard! Your reviews help your fellow scientists make the right decisions. Thank you for your contribution.



Anti-Ccl3 Antibody

For Research Use Only. Not for use in diagnostic procedures.