

Anti-TRAF3 Antibody

Catalog Number: A00424-1

About TRAF3

Tumor necrosis factor (TNF) receptor associated factors (TRAFs) are the major signal transducers for the TNF receptor superfamily and the interleukin-1 receptor/Toll-like receptor (IL-1/TLR) superfamily. TRAF3 was first identified by its interaction with CD40 and the Epstein-Barr virus transforming protein LMP1. Several TRAF3 mRNA splice variants exist and some of these can activate the transcription factor NF-kappaB. Besides CD40, TRAF3 also interacts with the TRFR superfamily member lymphotoxin-beta receptor (LTbetaR) in association with TRAF2 and the apoptosis inhibitors cIAP1 and Smac. It has been suggested that TRAF3 induces mitochondria-mediated apoptosis upon binding of the TNF family cytokine LIGHT by LTbetaR.

Overview

| | |
|----------------------|--|
| Product Name | Anti-TRAF3 Antibody |
| Reactive Species | Human, Mouse, Rat |
| Description | Boster Bio Anti-TRAF3 Antibody (Catalog # A00424-1). Tested in ELISA, WB, ICC applications. This antibody reacts with Human, Mouse, Rat. |
| Application | ELISA, ICC, WB |
| Clonality | Polyclonal |
| Formulation | TRAF3 Antibody is supplied in PBS containing 0.02% sodium azide. |
| Storage Instructions | TRAF3 antibody can be stored at 4°C for three months and -20°C, stable for up to one year. Avoid repeated freeze-thaw cycles. Antibodies should not be exposed to prolonged high temperatures. |
| Host | Rabbit |
| Uniprot ID | Q13114 |

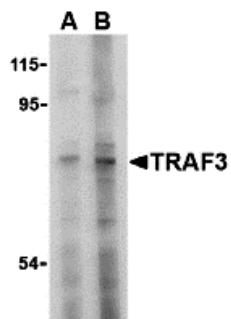
Technical Details

| | |
|----------------------------|--|
| Immunogen | TRAF3 antibody was raised against a 15 amino acid synthetic peptide from near the amino terminus of human. The immunogen is located within amino acids 20 - 70 of TRAF3. |
| Predicted Reactive Species | Bovine, Pig, Rat |
| Isotype | IgG |
| Form | Liquid |
| Concentration | 1 mg/mL |
| Purification | TRAF3 Antibody is affinity chromatography purified via peptide column. |

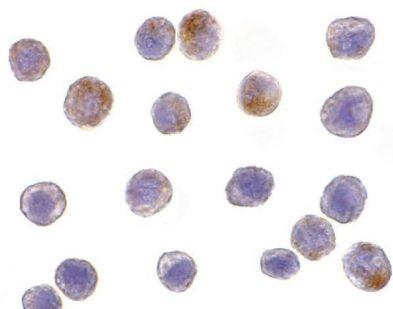
Suggested Dilutions

TRAF3 antibody can be used for the detection of TRAF3 by Western blot at 2 - 4 ug/mL. Antibody can also be used for immunocytochemistry starting at 10 ug/mL.
Antibody validated: Western Blot in human samples and Immunocytochemistry in human samples.
All other applications and species not yet tested. Optimal dilutions for each application should be determined by the researcher.

Anti-TRAF3 Antibody (A00424-1) Images



Western blot analysis of TRAF3 in HeLa cell lysate with TRAF3 antibody at (A) 2 and (B) 4 ug/mL.



Immunocytochemistry of TRAF3 in HeLa cells with TRAF3 antibody at 10 ug/mL.

Submit a product review to [Biocompare.com](https://www.biocompare.com)

Submit a review of this product to [Biocompare.com](https://www.biocompare.com) to receive a \$20 Amazon.com giftcard! Your reviews help your fellow scientists make the right decisions. Thank you for your contribution.



Anti-TRAF3 Antibody

For Research Use Only. Not for use in diagnostic procedures.