

## Anti-Phospho-Lck (Y393) Antibody

Catalog Number: A00425Y393

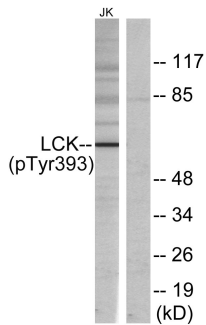
### Overview

Product Name	Anti-Phospho-Lck (Y393) Antibody
Reactive Species	Human, Mouse, Rat
Description	Boster Bio Anti-Phospho-Lck (Y393) Antibody catalog # A00425Y393. Tested in WB, IF, ELISA applications. This antibody reacts with Human, Mouse, Rat.
Application	ELISA, IF, WB
Clonality	Polyclonal
Formulation	Liquid in PBS containing 50% glycerol, 0.5% stabilizing protein and 0.02% sodium azide. *This antibody is supplied in a stabilized formulation. Compatibility with conjugation reactions depends on the chemistry of the conjugation method used. For conjugation methods that are not compatible with the stabilizing components present in this formulation, a carrier-free antibody format is required.
Storage Instructions	Store at -20°C for one year. For short term storage and frequent use, store at 4°C for up to one month. Avoid repeated freeze-thaw cycles.
Host	Rabbit
Uniprot ID	P06239

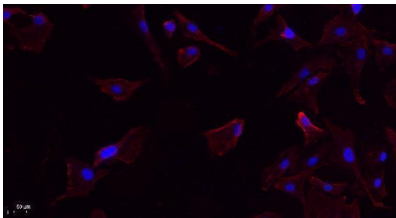
### Technical Details

Immunogen	The antiserum was produced against synthesized peptide derived from human Lck around the phosphorylation site of Tyr393. AA range:361-410
Isotype	IgG
Form	Liquid
Concentration	1 mg/ml
Purification	The antibody was affinity-purified from rabbit antiserum by affinity-chromatography using epitope-specific immunogen.
Suggested Dilutions	WB 1:500-1:2000 IF 1:200-1:1000 ELISA 1:10000

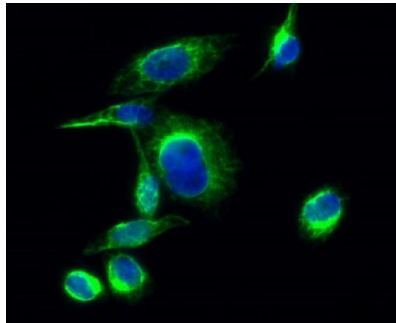
## Anti-Phospho-Lck (Y393) Antibody (A00425Y393) Images



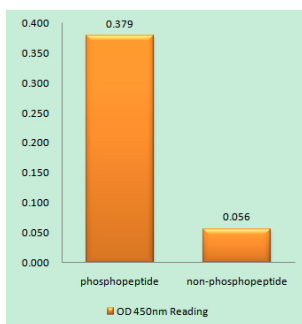
Western blot analysis of lysates from Jurkat cells, using Lck (Phospho-Tyr393) Antibody. The lane on the right is blocked with the phosphopeptide.



Immunofluorescence analysis of A549. 1, primary Antibody (red) was diluted at 1:200 (4°C overnight). 2, Goat Anti Rabbit IgG (H&L) - Alexa Fluor 594 Secondary antibody was diluted at 1:1000 (room temperature, 50min). 3, Picture B: DAPI (blue) 10min.



Immunofluorescence analysis of HeLa cell. 1, Lck (phospho Tyr393) Polyclonal Antibody (green) was diluted at 1:200 (4°C overnight). 2, Goat Anti Rabbit Alexa Fluor 488 was diluted at 1:1000 (room temperature, 50min). 3 DAPI (blue) 10min.



Enzyme-Linked Immunosorbent Assay (Phospho-ELISA) for Immunogen Phosphopeptide (Phospho-left) and Non-Phosphopeptide (Phospho-right), using Lck (Phospho-Tyr393) Antibody

### Submit a product review to Biocompare.com

Submit a review of this product to Biocompare.com to receive a \$20 Amazon.com giftcard! Your reviews help your fellow scientists make the right decisions. Thank you for your contribution.



Anti-Phospho-Lck (Y393) Antibody

For Research Use Only. Not for use in diagnostic procedures.