

Anti-NPC1 Antibody

Catalog Number: A00428

About NPC1

Mutations in the Niemann-Pick disease type C1 (NPC1) gene result in a fatal progressive neurodegenerative disorder characterized by an abnormal sequestration of lipids including cholesterol and glycosphingolipids. The NPC1 protein is a large protein that resides in the limiting membrane of endosomes and lysosomes and mediates intracellular cholesterol trafficking via binding of cholesterol to its N-terminal domain. NPC1 transports low-density lipoproteins to late endosomal/lysosomal compartments where they are hydrolyzed and released as free cholesterol. NPC1, in addition to FTO, MC4R, and PTER has recently been shown to be a new risk loci for early-onset and morbid adult obesity in European populations. This anti-NPC1 antibody will not cross-react to NPC2, another gene whose defects also result in Niemann-Pick type C disease.

Overview

| | |
|----------------------|---|
| Product Name | Anti-NPC1 Antibody |
| Reactive Species | Human, Mouse |
| Description | Boster Bio Anti-NPC1 Antibody (Catalog # A00428). Tested in ELISA, WB, IHC-P, IF applications. This antibody reacts with Human, Mouse. |
| Application | ELISA, IF, IHC-P, WB |
| Clonality | Polyclonal |
| Formulation | NPC1 Antibody is supplied in PBS containing 0.02% sodium azide. |
| Storage Instructions | NPC1 antibody can be stored at 4°C for three months and -20°C, stable for up to one year. Avoid repeated freeze-thaw cycles. Antibodies should not be exposed to prolonged high temperatures. |
| Host | Rabbit |
| Uniprot ID | O15118 |

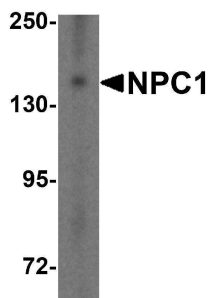
Technical Details

| | |
|----------------------------|---|
| Immunogen | NPC1 antibody was raised against a 16 amino acid synthetic peptide from near the carboxy terminus of human NPC1. The immunogen is located within the last 50 amino acids of NPC1. |
| Predicted Reactive Species | Pig |
| Isotype | IgG |
| Form | Liquid |
| Concentration | 1 mg/mL |
| Purification | NPC1 Antibody is affinity chromatography purified via peptide column. |

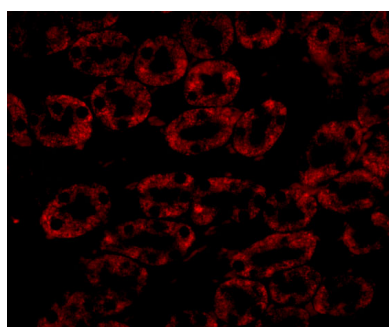
Suggested Dilutions

NPC1 antibody can be used for detection of NPC1 by Western blot at 1 ug/mL. Antibody can also be used for immunohistochemistry starting at 2.5 ug/mL. For immunofluorescence start at 20 ug/mL. Antibody validated: Western Blot in human samples; Immunohistochemistry in mouse samples and Immunofluorescence in mouse samples. All other applications and species not yet tested. Optimal dilutions for each application should be determined by the researcher.

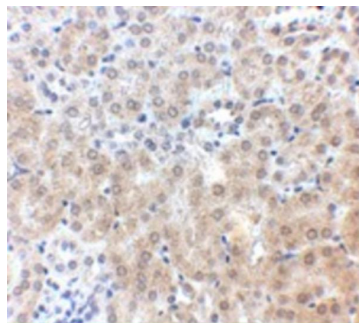
Anti-NPC1 Antibody (A00428) Images



Western blot analysis of NPC1 in HepG2 cell lysate with NPC1 antibody at 1 ug/mL.



Immunofluorescence of NPC1 in Mouse Kidney cells with NPC1 antibody at 20 ug/mL.



Immunohistochemistry of NPC1 in mouse kidney tissue with NPC1 antibody at 2.5 ug/mL.

Submit a product review to [Biocompare.com](https://www.biocompare.com)

Submit a review of this product to [Biocompare.com](https://www.biocompare.com) to receive a \$20 Amazon.com giftcard! Your reviews help your fellow scientists make the right decisions. Thank you for your contribution.



Anti-NPC1 Antibody

For Research Use Only. Not for use in diagnostic procedures.