

## Anti-Niemann Pick C1/NPC1 Antibody Picoband™

Catalog Number: A00428-2

### About NPC1

Niemann-Pick disease, type C1 (NPC1) is a membrane protein that mediates intracellular cholesterol trafficking in mammals. In humans it is encoded by the NPC1 gene (chromosome location 18q11). This gene encodes a large protein that resides in the limiting membrane of endosomes and lysosomes and mediates intracellular cholesterol trafficking via binding of cholesterol to its N-terminal domain. It is predicted to have a cytoplasmic C-terminus, 13 transmembrane domains, and 3 large loops in the lumen of the endosome - the last loop being at the N-terminus. This protein transports low-density lipoproteins to late endosomal/lysosomal compartments where they are hydrolyzed and released as free cholesterol. Defects in this gene cause Niemann-Pick type C disease, a rare autosomal recessive neurodegenerative disorder characterized by over accumulation of cholesterol and glycosphingolipids in late endosomal/lysosomal compartments.

### Overview

Product Name	Anti-Niemann Pick C1/NPC1 Antibody Picoband™
Reactive Species	Human, Mouse, Rat
Description	Boster Bio Anti-Niemann Pick C1/NPC1 Antibody Picoband™ catalog # A00428-2. Tested in ELISA, WB applications. This antibody reacts with Human, Mouse, Rat.
Application	ELISA, WB
Clonality	Polyclonal
Formulation	Each vial contains 4mg Trehalose, 0.9mg NaCl, 0.2mg Na <sub>2</sub> HPO <sub>4</sub> , 0.05mg NaN <sub>3</sub> .
Storage Instructions	Store at -20°C for one year from date of receipt. After reconstitution, at 4°C for one month. It can also be aliquotted and stored frozen at -20°C for six months. Avoid repeated freeze-thaw cycles.
Host	Rabbit
Uniprot ID	O15118

### Technical Details

Immunogen	E. coli-derived human Niemann Pick C1 recombinant protein (Position: A1022-F1278).
Predicted Reactive Species	Chicken
Recommended Detection Systems	Boster recommends Enhanced Chemiluminescent Kit with anti-Rabbit IgG (EK1002) for Western blot.
Cross Reactivity	No cross-reactivity with other proteins.
Isotype	Rabbit IgG
Form	Lyophilized

Concentration	Adding 0.2 ml of distilled water will yield a concentration of 500 ug/ml.
Suggested Dilutions	<p>Dilute the sample so that the expected range of concentrations fall within the detection range of this kit.</p> <p>If the expected range of concentration is unknown, a pilot test should be conducted to decide the optimal dilution ratio for your samples.</p> <p>Some PubMed article(s) citing the expression level of this target are as follows:</p> <p>Boster Bio's internal QC testing used:</p> <p>Western blot, 0.1-0.5ug/ml</p> <p>Direct ELISA, 0.1-0.5ug/ml</p>

## Anti-Niemann Pick C1/NPC1 Antibody Picoband™ (A00428-2) Images

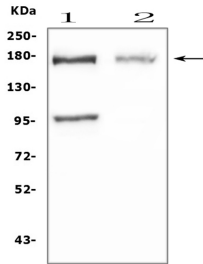


Figure 1. Western blot analysis of Niemann Pick C1 using anti-Niemann Pick C1 antibody (A00428-2). Electrophoresis was performed on a 5-20% SDS-PAGE gel at 70V (Stacking gel) / 90V (Resolving gel) for 2-3 hours. The sample well of each lane was loaded with 50ug of sample under reducing conditions.

Lane 1: rat pancreas tissue lysates,

Lane 2: mouse NIH3T3 whole cell lysates.

After Electrophoresis, proteins were transferred to a Nitrocellulose membrane at 150mA for 50-90 minutes. Blocked the membrane with 5% Non-fat Milk/ TBS for 1.5 hour at RT. The membrane was incubated with rabbit anti-Niemann Pick C1 antigen affinity purified polyclonal antibody (Catalog # A00428-2) at 0.5 ug/mL overnight at 4°C, then washed with TBS-0.1%Tween 3 times with 5 minutes each and probed with a goat anti-rabbit IgG-HRP secondary antibody at a dilution of 1:10000 for 1.5 hour at RT. The signal is developed using an Enhanced Chemiluminescent detection (ECL) kit (Catalog # EK1002) with Tanon 5200 system. A specific band was detected for Niemann Pick C1 at approximately 170KD. The expected band size for Niemann Pick C1 is at 142KD.

## Submit a product review to Biocompare.com

Submit a review of this product to Biocompare.com to receive a \$20 Amazon.com giftcard! Your reviews help your fellow scientists make the right decisions. Thank you for your contribution.



Anti-Niemann Pick C1/NPC1 Antibody™