

## Anti-Toll-like receptor 1 TLR1 Antibody

Catalog Number: A00429

### About TLR1

Toll-like receptors (TLRs) are evolutionarily conserved pattern-recognition molecules resembling the toll proteins that mediate antimicrobial responses in *Drosophila*. These proteins recognize different microbial products during infection and serve as an important link between the innate and adaptive immune responses. The TLRs act through adaptor molecules such as MyD88 and TIRAP to activate various kinases and transcription factors so the organism can respond to potential infection. TLR1 is co-expressed with TLR2 on myeloid cells of the innate immune systems in lymphoid tissue such as monocytes and dendritic cells where they form heterodimers that can recognize triacylated lipoproteins.

### Overview

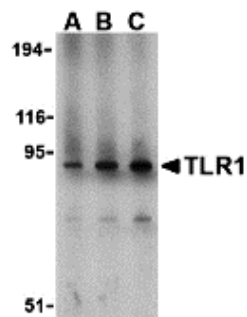
Product Name	Anti-Toll-like receptor 1 TLR1 Antibody
Reactive Species	Human, Mouse
Description	Boster Bio Anti-Toll-like receptor 1 TLR1 Antibody (Catalog # A00429). Tested in ELISA, WB, IHC-P, IF applications. This antibody reacts with Human, Mouse.
Application	ELISA, IF, IHC-P, WB
Clonality	Polyclonal
Formulation	TLR1 Antibody is supplied in PBS containing 0.02% sodium azide.
Storage Instructions	TLR1 antibody can be stored at 4°C for three months and -20°C, stable for up to one year. Avoid repeated freeze-thaw cycles. Antibodies should not be exposed to prolonged high temperatures.
Host	Rabbit
Uniprot ID	Q15399

### Technical Details

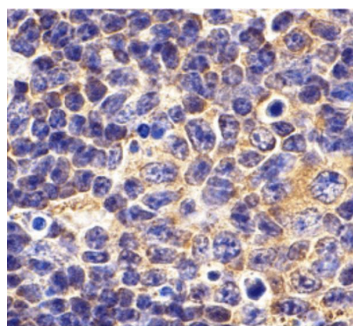
Immunogen	TLR1 antibody was raised against a peptide corresponding to 16 amino acids near the amino terminus of human TLR1. The immunogen is located within amino acids 160 - 210 of TLR1.
Predicted Reactive Species	Pig
Isotype	IgG
Form	Liquid
Concentration	1 mg/mL
Purification	TLR1 Antibody is affinity chromatography purified via peptide column.
Suggested Dilutions	TLR1 antibody can be used for detection of TLR1 by Western blot at 1 to 4 ug/mL. Antibody can also be used for immunohistochemistry starting at 10 ug/mL. For immunofluorescence start at 20 ug/mL.

Antibody validated: Western Blot in mouse samples; Immunohistochemistry in mouse samples and Immunofluorescence in mouse samples. All other applications and species not yet tested. Optimal dilutions for each application should be determined by the researcher.

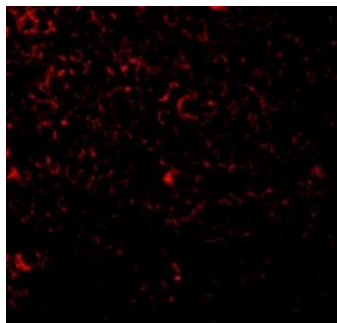
## Anti-Toll-like receptor 1 TLR1 Antibody (A00429) Images



Western blot analysis of TLR1 in mouse spleen lysate with TLR1 antibody at (A) 1, (B) 2, and (C) 4 ug/mL.



Immunohistochemistry of TLR1 in mouse spleen tissue with TLR1 antibody at 10 ug/mL.



Immunofluorescence of TLR1 in Mouse Spleen tissue

### Submit a product review to [Biocompare.com](https://www.biocompare.com)

Submit a review of this product to [Biocompare.com](https://www.biocompare.com) to receive a \$20 Amazon.com giftcard! Your reviews help your fellow scientists make the right decisions. Thank you for your contribution.



Anti-Toll-like receptor 1 TLR1 Antibody

For Research Use Only. Not for use in diagnostic procedures.