

Anti-Lamin A/C (phospho-S22) LMNA Antibody

Catalog Number: A00438S22

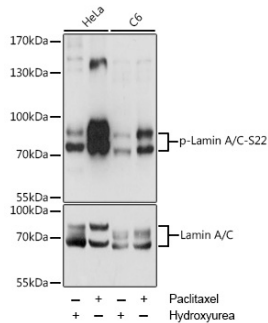
Overview

Product Name	Anti-Lamin A/C (phospho-S22) LMNA Antibody
Reactive Species	Human, Rat
Description	Boster Bio Anti-Lamin A/C (phospho-S22) LMNA Antibody catalog # A00438S22. Tested in WB,IP applications. This antibody reacts with Human,Rat.
Application	IP, WB
Clonality	Polyclonal
Formulation	Rabbit IgG, 1mg/ml in PBS with 0.02% sodium azide, 50% glycerol, pH7.2
Storage Instructions	Store at -20°C for one year. For short term storage and frequent use, store at 4°C for up to one month. Avoid repeated freeze-thaw cycles.
Host	Rabbit
Uniprot ID	P02545

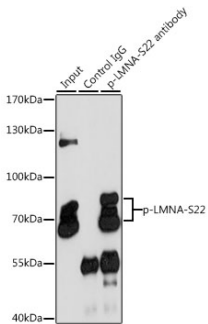
Technical Details

Immunogen	A synthetic phosphorylated peptide around S22 of human Lamin A(NP_005563.1).
Isotype	IgG
Form	Liquid
Concentration	1 mg/ml
Purification	The antibody was affinity-purified from rabbit antiserum by affinity-chromatography using epitope-specific immunogen and the purity is > 95% (by SDS-PAGE).
Suggested Dilutions	WB: 1:500-1:2000 IP: 1:50-1:100

Anti-Lamin A/C (phospho-S22) LMNA Antibody (A00438S22) Images



Western blot analysis of extracts of various cell lines, using Phospho-Lamin A/C-S22 antibody at 1:2000 dilution or Lamin A antibody. HeLa cells were treated by Hydroxyurea at 37°C for 20 hours or treated by Paclitaxel at 37°C for 20 hours. C6 cells were treated by Hydroxyurea at 37°C for 20 hours or treated by Paclitaxel at 37°C for 20 hours. Secondary antibody: HRP Goat Anti-Rabbit IgG at 1:10000 dilution. Lysates/proteins: 25ug per lane. Blocking buffer: 3% BSA. Detection: ECL Enhanced Kit. Exposure time: 1s.



Immunoprecipitation analysis of 200ug extracts of HeLa cells, using 3 ug Phospho-Lamin A/C-S22 pAb. Western blot was performed from the immunoprecipitate using Phospho-Lamin A/C-S22 pAb at a dilution of 1:1000. HeLa cells were treated by Paclitaxel at 37°C for 20 hours.

Submit a product review to Biocompare.com

Submit a review of this product to Biocompare.com to receive a \$20 Amazon.com giftcard! Your reviews help your fellow scientists make the right decisions. Thank you for your contribution.



Anti-Lamin A/C (phospho-S22) LMNA Antibody

For Research Use Only. Not for use in diagnostic procedures.