

Anti-RAF1 (phospho-S289) Antibody

Catalog Number: A00446S289

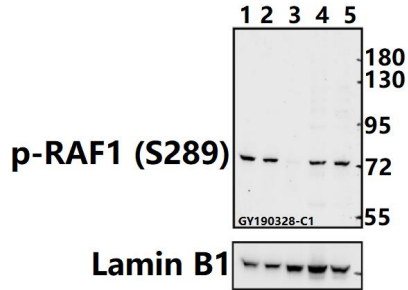
Overview

Product Name	Anti-RAF1 (phospho-S289) Antibody
Reactive Species	Human, Mouse
Description	Boster Bio Anti-RAF1 (phospho-S289) Antibody catalog # A00446S289. Tested in WB applications. This antibody reacts with Human, Mouse.
Application	WB
Clonality	Polyclonal
Formulation	Rabbit IgG, 1mg/ml in PBS with 0.02% sodium azide, 50% glycerol, pH7.2
Storage Instructions	Store at -20°C for one year. For short term storage and frequent use, store at 4°C for up to one month. Avoid repeated freeze-thaw cycles.
Host	Rabbit
Uniprot ID	P04049

Technical Details

Immunogen	Synthetic phosphopeptide derived from human RAF1 around the phosphorylation site of Serine289.
Isotype	IgG
Form	Liquid
Concentration	1 mg/ml
Purification	The antibody was affinity-purified from rabbit antiserum by affinity-chromatography using epitope-specific immunogen and the purity is > 95% (by SDS-PAGE).
Suggested Dilutions	WB: 1:500-1:1000

Anti-RAF1 (phospho-S289) Antibody (A00446S289) Images



Western blot (WB) analysis of RAF1 (phospho-S289) polyclonal antibody at 1:500 dilution Lane1:AML-12 whole cell lysate(40ug) Lane2:CT26 whole cell lysate(40ug) Lane3:PC12 whole cell lysate(40ug) Lane4:HEK293T whole cell lysate(40ug) Lane5:A549 whole cell lysate(40ug)

Submit a product review to Biocompare.com

Submit a review of this product to Biocompare.com to receive a \$20 Amazon.com giftcard! Your reviews help your fellow scientists make the right decisions. Thank you for your contribution.



Anti-RAF1 (phospho-S289) Antibody

For Research Use Only. Not for use in diagnostic procedures.