

Anti-Raf1 (Phospho-S43) Antibody

Catalog Number: A00446S43

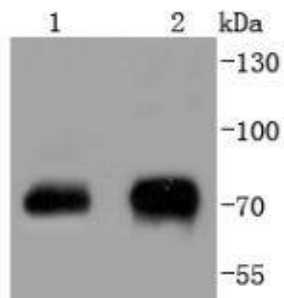
Overview

Product Name	Anti-Raf1 (Phospho-S43) Antibody
Reactive Species	Human, Mouse, Rat
Description	Boster Bio Anti-Raf1 (Phospho-S43) Antibody catalog # A00446S43. Tested in WB applications. This antibody reacts with Human, Mouse, Rat.
Application	WB
Clonality	Polyclonal
Formulation	Rabbit IgG, 1mg/ml in PBS with 0.02% sodium azide, 50% glycerol, pH7.2
Storage Instructions	Store at -20°C for one year. For short term storage and frequent use, store at 4°C for up to one month. Avoid repeated freeze-thaw cycles.
Host	Rabbit
Uniprot ID	P04049

Technical Details

Immunogen	Synthetic phospho-peptide corresponding to residues surrounding Ser43 of human Raf1.
Isotype	IgG
Form	Liquid
Concentration	1 mg/ml
Purification	ProA affinity purified
Suggested Dilutions	WB: 1:1,000-1:2,000

Anti-Raf1 (Phospho-S43) Antibody (A00446S43) Images



Western blot analysis of Phospho-Raf1(S43) on different lysates using anti-Phospho-Raf1(S43) antibody at 1/1,000 dilution. Positive control: Lane 1: NIH/3T3 Lane 2: 293T

Submit a product review to Biocompare.com

Submit a review of this product to Biocompare.com to receive a \$20 Amazon.com giftcard! Your reviews help your fellow scientists make the right decisions. Thank you for your contribution.



Anti-Raf1 (Phospho-S43) Antibody

For Research Use Only. Not for use in diagnostic procedures.