

Anti-NPM1 Antibody (N-term)

Catalog Number: A00450

About NPM1

NPM1 is a ubiquitously expressed nucleolar protein that shuttles between the nucleus and cytoplasm. It is implicated in multiple functions, including ribosomal protein assembly and transport, control of centrosome duplication, and regulation of the tumor suppressor ARF. NPM1 mutations that relocalize NPM1 from the nucleus into the cytoplasm are associated with development of acute myeloid leukemia.

Overview

Product Name	Anti-NPM1 Antibody (N-term)
Reactive Species	Human
Description	Boster Bio Anti-NPM1 Antibody (N-term) (Catalog # A00450). Tested in WB, IF, IHC-P, Flow Cytometry application(s). This antibody reacts with Human.
Application	Flow Cytometry, IF, IHC-P, WB
Clonality	Polyclonal
Formulation	Purified polyclonal antibody supplied in PBS with 0.09% (W/V) sodium azide.
Storage Instructions	Maintain refrigerated at 2-8°C for up to 2 weeks. For long-term storage, store at -20°C in small aliquots to prevent freeze-thaw cycles.
Host	Rabbit
Uniprot ID	P06748

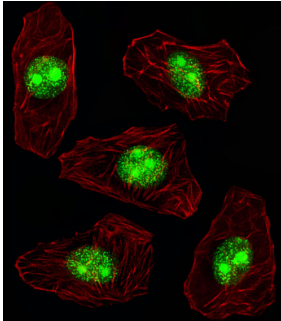
Technical Details

Immunogen	This NPM1 antibody is generated from rabbits immunized with a KLH conjugated synthetic peptide between 7-33 amino acids from the N-terminal region of human NPM1.
Predicted Reactive Species	Mouse, Rat
Recommended Detection Systems	Boster recommends Enhanced Chemiluminescent Kit with anti-Rabbit IgG (EK1002) for Western blot, and HRP Conjugated anti-Rabbit IgG Super Vision Assay Kit (SV0002-1) for IHC(P).
Cross Reactivity	No cross reactivity with other proteins.
Isotype	Rabbit IgG
Form	Liquid
Purification	This antibody is prepared by Saturated Ammonium Sulfate (SAS) precipitation followed by dialysis against PBS.

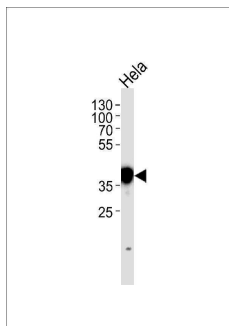
Suggested Dilutions

IF: 1:10-1:50
WB: 1:1000
IHC-P: 1:10-1:50
FC: 1:10-1:50

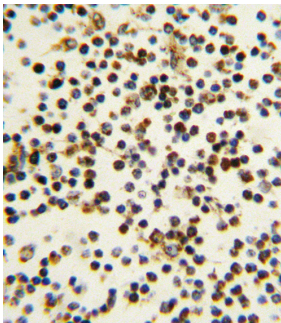
Anti-NPM1 Antibody (N-term) (A00450) Images



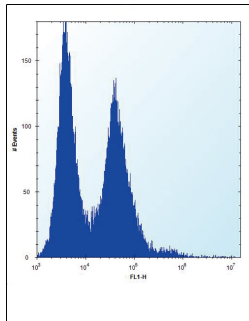
Fluorescent image of A549 cell stained with NPM1 Antibody (N-term). A549 cells were fixed with 4% PFA (20 min), permeabilized with Triton X-100 (0.1%, 10 min), then incubated with NPM1 primary antibody (1:25, 1 h at 37°C). For secondary antibody, Alexa Fluor® 488 conjugated donkey anti-rabbit antibody (green) was used (1:400, 50 min at 37°C). Cytoplasmic actin was counterstained with Alexa Fluor® 555 (red) conjugated Phalloidin (7 units/ml, 1 h at 37°C). NPM1 immunoreactivity is localized to Nucleus and Nucleolus significantly.



NPM1 Antibody (N-term) western blot analysis in HeLa cell line lysates (35 µg/lane). This demonstrates the NPM1 antibody detected the NPM1 protein (arrow).



Formalin-fixed and paraffin-embedded human lymph tissue reacted with NPM1 antibody (N-term), which was peroxidase-conjugated to the secondary antibody, followed by DAB staining. This data demonstrates the use of this antibody for immunohistochemistry; clinical relevance has not been evaluated.



NPM1 Antibody (N-term) flow cytometric analysis of HeLa cells (right histogram) compared to a negative control cell (left histogram). FITC-conjugated donkey-anti-rabbit secondary antibodies were used for the analysis.

Submit a product review to [Biocompare.com](https://www.biocompare.com)

Submit a review of this product to [Biocompare.com](https://www.biocompare.com) to receive a \$20 Amazon.com giftcard! Your reviews help your fellow scientists make the right decisions. Thank you for your contribution.



Anti-NPM1 Antibody (N-term)

For Research Use Only. Not for use in diagnostic procedures.