

## Anti-NPM (phospho-T199) NPM1 Antibody

Catalog Number: A00450T199-1

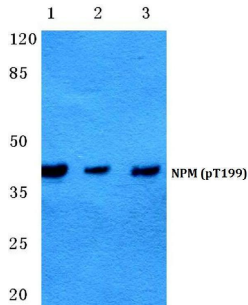
### Overview

Product Name	Anti-NPM (phospho-T199) NPM1 Antibody
Reactive Species	Human, Mouse, Rat
Description	Boster Bio Anti-NPM (phospho-T199) NPM1 Antibody catalog # A00450T199-1. Tested in WB,IHC applications. This antibody reacts with Human,Mouse,Rat.
Application	IHC, WB
Clonality	Polyclonal
Formulation	Rabbit IgG, 1mg/ml in PBS with 0.02% sodium azide, 50% glycerol, pH7.2
Storage Instructions	Store at -20°C for one year. For short term storage and frequent use, store at 4°C for up to one month. Avoid repeated freeze-thaw cycles.
Host	Rabbit
Uniprot ID	P06748

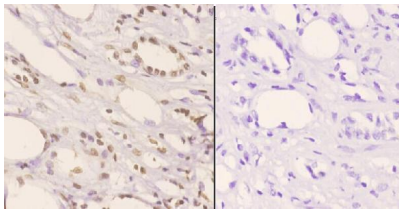
### Technical Details

Immunogen	Synthetic phosphopeptide derived from human NPM around the phosphorylation site of Threonine 199.
Isotype	IgG
Form	Liquid
Concentration	1 mg/ml
Purification	The antibody was affinity-purified from mouse antiserum by affinity-chromatography using epitope-specific immunogen and the purity is > 95% (by SDS-PAGE).
Suggested Dilutions	WB: 1:500-1:1000 IHC: 1:50-1:200

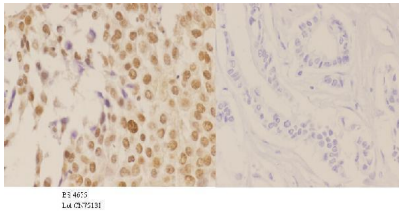
## Anti-NPM (phospho-T199) NPM1 Antibody (A00450T199-1) Images



Western blot (WB) analysis of p-NPM (T199) polyclonal antibody at 1:500 dilution Lane1:HeLa cell lysate  
Lane2:Mouse liver tissue lysate Lane3:Rat liver tissue lysate



Immunohistochemistry (IHC) analyzes of p-NPM (T199) pAb in paraffin-embedded human kidney carcinoma tissue at 1:50. showing nucleus staining. Negative control (the right) Using PBS instead of primary antibody, secondary antibody is Goat Anti-Rabbit IgG-biotin followed by avidin-peroxidase.



Immunohistochemistry (IHC) analyzes of p-NPM (T199) pAb in paraffin-embedded human breast carcinoma tissue at 1:50. showing Nucleus staining. Negative control (the right) Using PBS instead of primary antibody, secondary antibody is Goat Anti-Rabbit IgG-biotin followed by avidin-peroxidase.

### Submit a product review to Biocompare.com

Submit a review of this product to Biocompare.com to receive a \$20 Amazon.com giftcard! Your reviews help your fellow scientists make the right decisions. Thank you for your contribution.



Anti-NPM (phospho-T199) NPM1 Antibody

For Research Use Only. Not for use in diagnostic procedures.