

## Anti-Lipocalin 2/LCN2 Antibody Picoband™

Catalog Number: A00452

### About Lcn2

Europhile gelatinase-associated lipocalin (NGAL) is a protein that in humans is encoded by the LCN2 gene. The binding of lipocalin-2 to bacterial siderophores is important in the innate immune response to bacterial infection. Upon encountering invading bacteria the toll-like receptors on immune cells stimulate the synthesis and secretion of lipocalin-2. Secreted lipocalin-2 then limits bacterial growth by sequestering iron-containing siderophores. Lipocalin-2 also functions as a growth factor.

### Overview

Product Name	Anti-Lipocalin 2/LCN2 Antibody Picoband™
Reactive Species	Mouse
Description	Boster Bio Anti-Lipocalin 2/LCN2 Antibody Picoband™ catalog # A00452. Tested in ELISA applications. This antibody reacts with Mouse.
Application	ELISA
Clonality	Polyclonal
Formulation	Each vial contains 4mg Trehalose, 0.9mg NaCl, 0.2mg Na2HPO4, 0.05mg NaN3.
Storage Instructions	Store at -20°C for one year from date of receipt. After reconstitution, at 4°C for one month. It can also be aliquotted and stored frozen at -20°C for six months. Avoid repeated freeze-thaw cycles.
Host	Rabbit
Uniprot ID	P11672

### Technical Details

Immunogen	E. coli-derived mouse Lipocalin 2 recombinant protein (Position: Q21-N200).
Predicted Reactive Species	Chicken
Recommended Detection Systems	Boster recommends Enhanced Chemiluminescent Kit with anti-Rabbit IgG (EK1002) for Western blot.
Cross Reactivity	No cross-reactivity with other proteins
Isotype	Rabbit IgG
Form	Lyophilized
Concentration	Adding 0.2 ml of distilled water will yield a concentration of 500 ug/ml.
Purification	Immunogen affinity purified.

**Suggested Dilutions**

Dilute the sample so that the expected range of concentrations fall within the detection range of this kit.

If the expected range of concentration is unknown, a pilot test should be conducted to decide the optimal dilution ratio for your samples.

Some PubMed article(s) citing the expression level of this target are as follows:

Boster Bio's internal QC testing used:

ELISA Capture (Matched Antibody Pair), 2-8ug/ml

## Anti-Lipocalin 2/LCN2 Antibody Picoband™ (A00452) Images

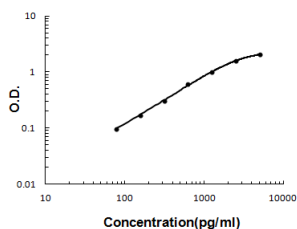


Figure 1. Sandwich ELISA - Recombinant mouse Lipocalin 2 protein standard curve.  
Use in combination with reagents from Mouse Lipocalin 2 ELISA Kit EZ-Set (DIY Antibody Pairs) (EZ0854).

## Submit a product review to Biocompare.com

Submit a review of this product to Biocompare.com to receive a \$20 Amazon.com giftcard! Your reviews help your fellow scientists make the right decisions. Thank you for your contribution.



Anti-Lipocalin 2/LCN2 Antibody™