

Anti-Beta-2-microglobulin B2M Antibody

Catalog Number: A00456

About B2M

Beta2-microglobulin (B2M) is a principal component of the Major Histocompatibility Complex (MHC) class I molecule, a ternary membrane protein complex that displays fragments derived from proteolyzed cytosolic proteins on the surface of cells for recognition by the surveillance immune system (1,2). B2M is involved in the presentation of peptide antigens to the immune system and plays a critically important role in immune system function (3). It is expressed on nearly all nucleated cells and contains one Ig-like C1-type (immunoglobulin-like) domain (2,3). Mutations in the Beta 2-microglobulin gene can enhance the progression of malignant melanoma and osteoarthritis (4,5).

Overview

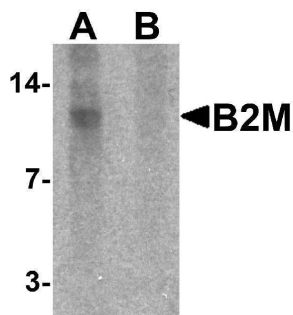
Product Name	Anti-Beta-2-microglobulin B2M Antibody
Reactive Species	Human
Description	Boster Bio Anti-Beta-2-microglobulin B2M Antibody (Catalog # A00456). Tested in ELISA, WB, IHC-P, IF applications. This antibody reacts with Human.
Application	ELISA, IF, IHC-P, WB
Clonality	Polyclonal
Formulation	B2M Antibody is supplied in PBS containing 0.02% sodium azide.
Storage Instructions	B2M antibody can be stored at 4°C for three months and -20°C, stable for up to one year.
Host	Rabbit
Uniprot ID	P61769

Technical Details

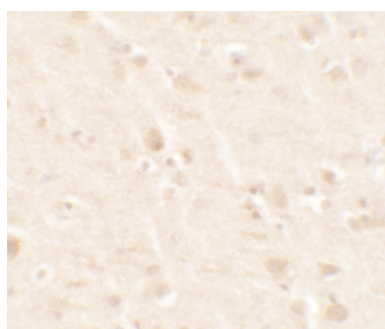
Immunogen	B2M antibody was raised against a 15 amino acid peptide near the carboxy terminus of human B2M. The immunogen is located within the last 50 amino acids of B2M.
Predicted Reactive Species	Mouse, Rat
Cross Reactivity	B2M antibody is human reactive.
Isotype	IgG
Form	Liquid
Concentration	1 mg/mL
Purification	B2M Antibody is affinity chromatography purified via peptide column.
Suggested Dilutions	B2M antibody can be used for detection of B2M by Western blot at 1 - 2 ug/mL.

Antibody validated: Western Blot in human samples; Immunohistochemistry in mouse samples and Immunofluorescence in mouse samples. All other applications and species not yet tested. Optimal dilutions for each application should be determined by the researcher.

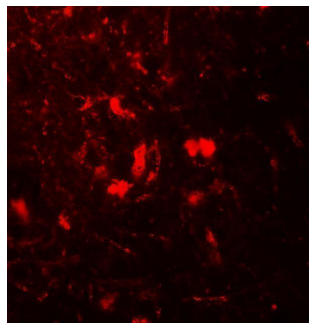
Anti-Beta-2-microglobulin B2M Antibody (A00456) Images



Western blot analysis of B2M in SK-N-SH cell lysate with B2M antibody at 1 ug/mL in (A) the absence and (B) the presence of blocking peptide.



Immunohistochemistry of B2M in mouse brain tissue with B2M antibody 5 ug/mL.



Immunofluorescence of B2M in mouse brain tissue with B2M antibody at 20 ug/mL.

Submit a product review to [Biocompare.com](https://www.biocompare.com)

Submit a review of this product to [Biocompare.com](https://www.biocompare.com) to receive a \$20 Amazon.com giftcard! Your reviews help your fellow scientists make the right decisions. Thank you for your contribution.



Anti-Beta-2-microglobulin B2M Antibody

For Research Use Only. Not for use in diagnostic procedures.