

Anti-B2M Antibody (C-term)

Catalog Number: A00456-6

About B2M

Beta-2-microglobulin is a serum protein found in association with the major histocompatibility complex (MHC) class I heavy chain on the surface of nearly all nucleated cells.

Overview

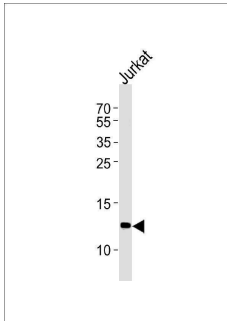
Product Name	Anti-B2M Antibody (C-term)
Reactive Species	Human
Description	Boster Bio Anti-B2M Antibody (C-term) (Catalog # A00456-6). Tested in WB, IHC-P, Flow Cytometry application(s). This antibody reacts with Human.
Application	Flow Cytometry, IHC-P, WB
Clonality	Polyclonal
Formulation	Purified polyclonal antibody supplied in PBS with 0.09% (W/V) sodium azide.
Storage Instructions	Maintain refrigerated at 2-8°C for up to 2 weeks. For long-term storage, store at -20°C in small aliquots to prevent freeze-thaw cycles.
Host	Rabbit
Uniprot ID	P61769

Technical Details

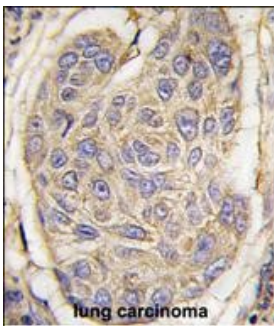
Immunogen	This B2M antibody is generated from rabbits immunized with a KLH conjugated synthetic peptide between 86-118 amino acids from the C-terminal region of human B2M.
Predicted Reactive Species	Mouse, Rat
Recommended Detection Systems	Boster recommends Enhanced Chemiluminescent Kit with anti-Rabbit IgG (EK1002) for Western blot, and HRP Conjugated anti-Rabbit IgG Super Vision Assay Kit (SV0002-1) for IHC(P).
Cross Reactivity	No cross reactivity with other proteins.
Isotype	Rabbit IgG
Form	Liquid
Purification	This antibody is prepared by Saturated Ammonium Sulfate (SAS) precipitation followed by dialysis against PBS.
Suggested Dilutions	WB: 1:1000

IHC-P: 1:10-1:50
FC: 1:10-1:50

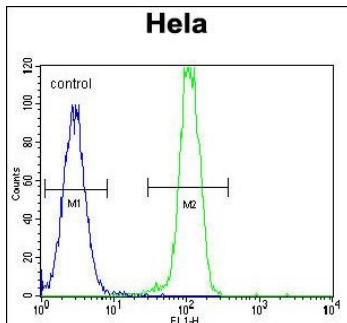
Anti-B2M Antibody (C-term) (A00456-6) Images



B2M Antibody (C-term) western blot analysis in Jurkat cell line lysates (35ug/lane). This demonstrates the B2M antibody detected the B2M protein (arrow).



Formalin-fixed and paraffin-embedded human lung carcinoma tissue reacted with B2M antibody (C-term) (Cat. #A00456-1), which was peroxidase-conjugated to the secondary antibody, followed by DAB staining. This data demonstrates the use of this antibody for immunohistochemistry; clinical relevance has not been evaluated.



B2M Antibody (C-term) (Cat. #A00456-1) flow cytometric analysis of HeLa cells (right histogram) compared to a negative control cell (left histogram). FITC-conjugated goat-anti-rabbit secondary antibodies were used for the analysis.

Submit a product review to [Biocompare.com](https://www.biocompare.com)

Submit a review of this product to [Biocompare.com](https://www.biocompare.com) to receive a \$20 Amazon.com giftcard! Your reviews help your fellow scientists make the right decisions. Thank you for your contribution.



Anti-B2M Antibody (C-term)

For Research Use Only. Not for use in diagnostic procedures.