

Anti-PIN1 (phospho-S16) Antibody

Catalog Number: A00467S16

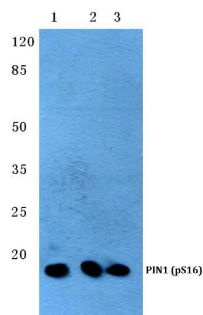
Overview

Product Name	Anti-PIN1 (phospho-S16) Antibody
Reactive Species	Human, Mouse, Rat
Description	Boster Bio Anti-PIN1 (phospho-S16) Antibody catalog # A00467S16. Tested in WB,IHC applications. This antibody reacts with Human,Mouse,Rat.
Application	IHC, WB
Clonality	Polyclonal
Formulation	Rabbit IgG, 1mg/ml in PBS with 0.02% sodium azide, 50% glycerol, pH7.2
Storage Instructions	Store at -20°C for one year. For short term storage and frequent use, store at 4°C for up to one month. Avoid repeated freeze-thaw cycles.
Host	Rabbit
Uniprot ID	Q13526

Technical Details

Immunogen	Synthetic phosphopeptide derived from human PIN1 around the phosphorylation site of Serine 16.
Isotype	IgG
Form	Liquid
Concentration	1 mg/ml
Purification	The antibody was affinity-purified from rabbit antiserum by affinity-chromatography using epitope-specific immunogen and the purity is > 95% (by SDS-PAGE).
Suggested Dilutions	WB: 1:500-1:1000 IHC: 1:50-1:200

Anti-PIN1 (phospho-S16) Antibody (A00467S16) Images



Western blot (WB) analysis of p-PIN1 (S16) polyclonal antibody at 1:500 dilution Lane1:Hela cell lysate treated with insulin(100nM,15min) Lane2:Raw264.7 cell lysate treated with insulin(100nM,15min) Lane3:PC12 cell lysate treated with insulin(100nM,15min)

Submit a product review to Biocompare.com

Submit a review of this product to Biocompare.com to receive a \$20 Amazon.com giftcard! Your reviews help your fellow scientists make the right decisions. Thank you for your contribution.



Anti-PIN1 (phospho-S16) Antibody

For Research Use Only. Not for use in diagnostic procedures.