

Anti-Integrin alpha 4 ITGA4 Antibody

Catalog Number: A00468

About ITGA4

The integrin alpha 4 (also known as CD49d and ITGA4) belongs to the integrin alpha chain family of proteins. Integrins are heterodimeric integral membrane proteins composed of an alpha and beta chains. Alpha4 chain associates with either beta1 or beta7 chain. It has been demonstrated that the putative ligand-binding sites of both integrin alpha4beta1 and alpha4beta7 is located on the alpha4 chain. These ligands included Madcam, VCAM, and fibronectin. Madcam is known as the principal ligand for integrin alpha4beta7. Recently it was also demonstrated that HIV-1 envelope can mimic Madcam by binding to and signaling through integrin alpha4beta7, the gut mucosal homing receptor for peripheral T cells.

Overview

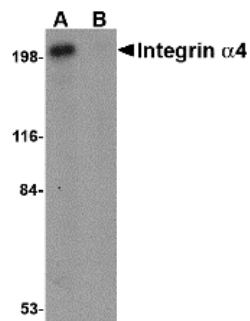
Product Name	Anti-Integrin alpha 4 ITGA4 Antibody
Reactive Species	Human, Mouse, Rat
Description	Boster Bio Anti-Integrin alpha 4 ITGA4 Antibody (Catalog # A00468). Tested in ELISA, WB applications. This antibody reacts with Human, Mouse, Rat.
Application	ELISA, WB
Clonality	Polyclonal
Formulation	Integrin alpha 4 Antibody is supplied in PBS containing 0.02% sodium azide.
Storage Instructions	Integrin alpha 4 antibody can be stored at 4°C for three months and -20°C, stable for up to one year. Avoid repeated freeze-thaw cycles. Antibodies should not be exposed to prolonged high temperatures.
Host	Rabbit
Uniprot ID	P13612

Technical Details

Immunogen	Integrin alpha 4 antibody was raised against a 13 amino acid synthetic peptide from near the carboxy terminus of human Integrin alpha 4. The immunogen is located within the last 50 amino acids of Integrin alpha 4.
Predicted Reactive Species	Bovine, Pig
Cross Reactivity	At least two isoforms are known to exist. The immunogen to this antibody is outside of the Integrin alpha4 recombinant protein fragment and thus will not recognize it.
Isotype	IgG
Form	Liquid
Concentration	1 mg/mL

Purification	Integrin alpha 4 Antibody is affinity chromatography purified via peptide column.
Suggested Dilutions	Integrin alpha 4 antibody can be used for the detection of Integrin alpha 4 by Western blot at 1 ug/mL. Despite its predicted molecular weight, Integrin alpha4 will often run at higher molecular weight in SDS-PAGE. Antibody validated: Western Blot in human samples. All other applications and species not yet tested. Optimal dilutions for each application should be determined by the researcher.

Anti-Integrin alpha 4 ITGA4 Antibody (A00468) Images



Western blot analysis of Integrin alpha 4 in Jurkat cell lysate with Integrin alpha 4 antibody at 1 ug/mL in (A) the absence and (B) the presence of blocking peptide.

Submit a product review to Biocompare.com

Submit a review of this product to Biocompare.com to receive a \$20 Amazon.com giftcard! Your reviews help your fellow scientists make the right decisions. Thank you for your contribution.



Anti-Integrin alpha 4 ITGA4 Antibody

For Research Use Only. Not for use in diagnostic procedures.