

Anti-SERPINC1 Antibody (C-term)

Catalog Number: A00469

About SERPINC1

SERPINC1 is a plasma protease inhibitor and a member of the serpin superfamily. This protein inhibits thrombin as well as other activated serine proteases of the coagulation system, and it regulates the blood coagulation cascade. The protein includes two functional domains: the heparin binding-domain at the N-terminus of the mature protein, and the reactive site domain at the C-terminus. The inhibitory activity is enhanced by the presence of heparin.

Overview

Product Name	Anti-SERPINC1 Antibody (C-term)
Reactive Species	Human, Mouse
Description	Boster Bio Anti-SERPINC1 Antibody (C-term) (Catalog # A00469). Tested in WB, IF, Flow Cytometry, IHC-P application(s). This antibody reacts with Human, Mouse.
Application	Flow Cytometry, IF, IHC-P, WB
Clonality	Polyclonal
Formulation	Purified polyclonal antibody supplied in PBS with 0.09% (W/V) sodium azide.
Storage Instructions	Maintain refrigerated at 2-8°C for up to 2 weeks. For long-term storage, store at -20°C in small aliquots to prevent freeze-thaw cycles.
Host	Rabbit
Uniprot ID	P01008

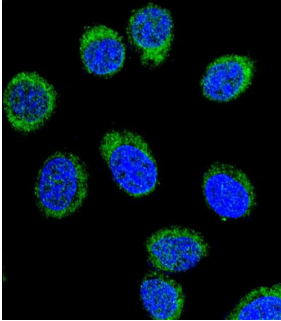
Technical Details

Immunogen	This SERPINC1 antibody is generated from rabbits immunized with a KLH conjugated synthetic peptide between 364-393 amino acids from the C-terminal region of human SERPINC1.
Predicted Reactive Species	Mouse
Recommended Detection Systems	Boster recommends Enhanced Chemiluminescent Kit with anti-Rabbit IgG (EK1002) for Western blot, and HRP Conjugated anti-Rabbit IgG Super Vision Assay Kit (SV0002-1) for IHC(P).
Cross Reactivity	No cross reactivity with other proteins.
Isotype	Rabbit IgG
Form	Liquid
Purification	This antibody is prepared by Saturated Ammonium Sulfate (SAS) precipitation followed by dialysis against PBS.

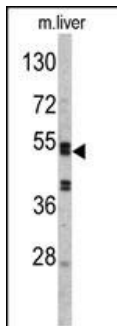
Suggested Dilutions

IF: 1:10-1:50
WB: 1:1000
IHC-P: 1:50-1:100
FC: 1:10-1:50

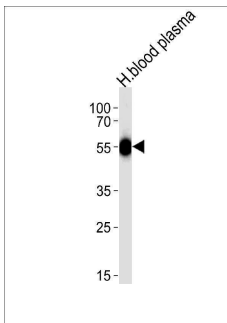
Anti-SERPINC1 Antibody (C-term) (A00469) Images



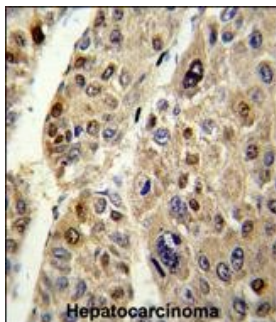
Confocal immunofluorescent analysis of SERPINC1 Antibody (C-term) with 293 cell followed by Alexa Fluor® 488-conjugated goat anti-rabbit IgG (green). DAPI was used to stain the cell nuclear (blue).



Western blot analysis of SERPINC1 Antibody (C-term) (Cat. #A00469) in mouse liver tissue lysates (35ug/lane). SERPINC1 (arrow) was detected using the purified Pab.

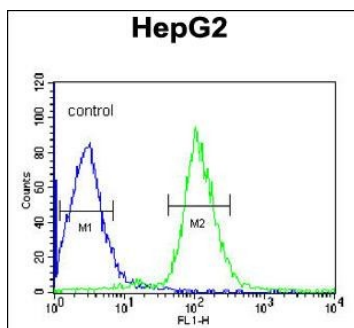


Western blot analysis of lysate from human blood plasma tissue lysate, using SERPINC1 Antibody (C-term) (Cat. #A00469). A00469 was diluted at 1:1000 at each lane. A goat anti-rabbit IgG H&L (HRP) at 1:5000 dilution was used as the secondary antibody. Lysate at 35ug per lane.



Formalin-fixed and paraffin-embedded human hepatocarcinoma reacted with SERPINC1 Antibody (C-term), which was peroxidase-conjugated to the secondary antibody, followed by DAB staining. This data demonstrates the use of this antibody for immunohistochemistry; clinical relevance has not been evaluated.

SERPINC1 Antibody (C-term) (Cat. #A00469) flow cytometric analysis of HepG2 cells (right histogram) compared to a negative control cell (left histogram). FITC-conjugated goat-anti-rabbit secondary antibodies were used for the analysis.



Submit a product review to Biocompare.com

Submit a review of this product to Biocompare.com to receive a \$20 Amazon.com giftcard! Your reviews help your fellow scientists make the right decisions. Thank you for your contribution.



Anti-SERPINC1 Antibody (C-term)

For Research Use Only. Not for use in diagnostic procedures.