

Anti-Galectin 1 Lgals1 Antibody

Catalog Number: A00470-2

About Lgals1

Galectin-1 is a protein that in humans is encoded by the LGALS1 gene. The galectins are a family of beta-galactoside-binding proteins implicated in modulating cell-cell and cell-matrix interactions. Galectin-1 may act as an autocrine negative growth factor that regulates cell proliferation. Galectin-1 expression in Hodgkin Lymphoma has also been shown to mediate immunosuppression of CD8+ T-cells. It is thought to play a role in creating immune tolerance in pregnancy. It has been found that Galectin-1-mediated production of IL6 may assist in augmenting the innate immune response against NiV. Galectin-1 may also be a significant factor that augments the efficiency of the HIV-1 infection process.

Overview

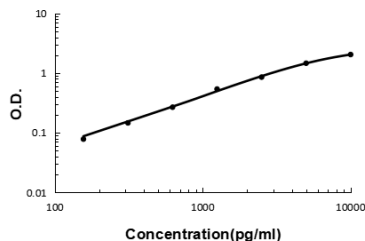
Product Name	Anti-Galectin 1 Lgals1 Antibody
Reactive Species	Mouse
Description	Boster Bio Anti-Galectin 1 Lgals1 Antibody catalog # A00470-2. Tested in ELISA applications. This antibody reacts with Mouse.
Application	ELISA (Cap)
Clonality	Polyclonal
Formulation	Each vial contains antibody formulated with stabilizing components, 0.9 mg NaCl, 0.2 mg Na ₂ HPO ₄ , and 0.05 mg NaN ₃ . *This antibody is supplied in a stabilized formulation. Compatibility with conjugation reactions depends on the chemistry of the conjugation method used. For conjugation methods that are not compatible with the stabilizing components present in this formulation, a carrier-free antibody format is required.
Storage Instructions	Store at -20°C for one year from date of receipt. After reconstitution, at 4°C for one month. It can also be aliquotted and stored frozen at -20°C for six months. Avoid repeated freeze-thaw cycles.
Host	Rabbit
Uniprot ID	P16045

Technical Details

Immunogen	E. coli-derived mouse Galectin 1 recombinant protein (Position: A2-E135).
Recommended Detection Systems	Boster recommends Enhanced Chemiluminescent Kit with anti-Rabbit IgG (EK1002) for Western blot, and HRP Conjugated anti-Rabbit IgG Super Vision Assay Kit (SV0002-1) for IHC(P).
Cross Reactivity	No cross-reactivity with other proteins.
Isotype	Rabbit IgG

Form	Lyophilized
Concentration	Adding 0.2 ml of distilled water will yield a concentration of 500 ug/ml.
Purification	Immunogen affinity purified.
Suggested Dilutions	ELISA Capture (Matched Antibody Pair), 2-8ug/ml

Anti-Galectin 1 Lgals1 Antibody (A00470-2) Images



Sandwich ELISA - Recombinant mouse Galectin 1 protein standard curve. Use in combination with reagents from Mouse Galectin 1 ELISA Kit EZ-Set (DIY Antibody Pairs) (EZ0763).

Submit a product review to Biocompare.com

Submit a review of this product to Biocompare.com to receive a \$20 Amazon.com giftcard! Your reviews help your fellow scientists make the right decisions. Thank you for your contribution.



Anti-Galectin 1 Lgals1 Antibody

For Research Use Only. Not for use in diagnostic procedures.