

Anti-(Mouse) Pdx1 Antibody (Center)

Catalog Number: A00491-2

About Pdx1

Activates insulin and somatostatin gene transcription. Key regulator of islet peptide hormone expression but also responsible for the development of the pancreas, most probably by determining maturation and differentiation of common pancreatic precursor cells in the developing gut. As part of a PDX1:PBX1b:MEIS2b complex in pancreatic acinar cells is involved in the transcriptional activation of the ELA1 enhancer; the complex binds to the enhancer B element and cooperates with the transcription factor 1 complex (PTF1) bound to the enhancer A element. Binds the DNA sequence 5'-CC[CT]TAATGGG-3'.

Overview

Product Name	Anti-(Mouse) Pdx1 Antibody (Center)
Reactive Species	Mouse
Description	Boster Bio Anti-(Mouse) Pdx1 Antibody (Center) (Catalog # A00491-2). Tested in WB, IF application(s). This antibody reacts with Mouse.
Application	IF, WB
Clonality	Polyclonal
Formulation	Purified polyclonal antibody supplied in PBS with 0.09% (W/V) sodium azide.
Storage Instructions	Maintain refrigerated at 2-8°C for up to 2 weeks. For long-term storage, store at -20°C in small aliquots to prevent freeze-thaw cycles.
Host	Rabbit
Uniprot ID	P52946

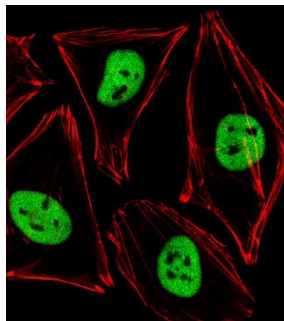
Technical Details

Immunogen	This Mouse Pdx1 antibody is generated from a rabbit immunized with a KLH conjugated synthetic peptide between 136-169 amino acids from the Central region of Mouse Pdx1.
Predicted Reactive Species	Mouse
Recommended Detection Systems	Boster recommends Enhanced Chemiluminescent Kit with anti-Rabbit IgG (EK1002) for Western blot, and HRP Conjugated anti-Rabbit IgG Super Vision Assay Kit (SV0002-1) for IHC(P).
Cross Reactivity	No cross reactivity with other proteins.
Isotype	Rabbit IgG
Form	Liquid
Purification	This antibody is purified through a protein A column, followed by peptide affinity purification.

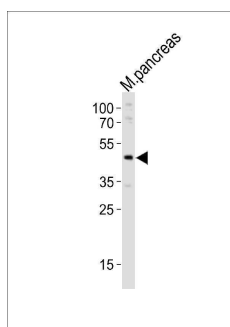
Suggested Dilutions

IF: 1:25
WB: 1:1000

Anti-(Mouse) Pdx1 Antibody (Center) (A00491-2) Images



Immunofluorescent analysis of 4% paraformaldehyde-fixed, 0.1% Triton X-100 permeabilized HeLa (Human Cervical epithelial adenocarcinoma cell line) cells labeling Pdx1 with A00491-2 at 1/25 dilution, followed by Alexa Fluor 488-conjugated goat anti-rabbit IgG secondary antibody at 1/400 dilution (green). Confocal image showing nuclear staining on HeLa cell line. Cytoplasmic actin is detected with Alexa Fluor® 555 conjugated with Phalloidin at 1/100 dilution (red).



Western blot analysis of lysate from mouse pancreas tissue lysate, using Pdx1 Antibody (Center) (Cat. #A00491-2). A00491-2 was diluted at 1:1000. A goat anti-rabbit IgG H&L (HRP) at 1:10000 dilution was used as the secondary antibody. Lysate at 20ug.

Submit a product review to Biocompare.com

Submit a review of this product to Biocompare.com to receive a \$20 Amazon.com giftcard! Your reviews help your fellow scientists make the right decisions. Thank you for your contribution.



Anti-(Mouse) Pdx1 Antibody (Center)

For Research Use Only. Not for use in diagnostic procedures.